

State of Washington

Forecast of the State Population

December 2021 Forecast

Forecasting & Research Division
Office of Financial Management
December 2021



To accommodate persons with disabilities, this document is available in alternative formats by calling the Office of Financial Management at 360-902-0555. TTY/TDD users should contact OFM via the Washington Relay Service at 711 or 1-800-833-6388.

VISIT OUR WEB SITE AT WWW.OFM.WA.GOV.

Table of Contents

| | |
|-----------|---|
| 1 | Part 1: Discussion of forecast model assumptions |
| 1 | Fertility |
| 1 | Mortality |
| 2 | Net migration |
| 2 | Figure 1.1: Actual and predicted net migration, 1990–2050 |
| 4 | Part 2: Discussion of state population change |
| 4 | Figure 2.1: Components of population change by decade, 1980–2050 |
| 5 | Table 2.1: Components of population change, 2000–50 |
| 6 | Part 3: Discussion of age-specific populations |
| 6 | School-age population |
| 6 | Figure 3.1: Population characteristics ages 15–17 |
| 6 | Table 3.1: Population ages 5–17 |
| 7 | College-age population |
| 7 | Figure 3.2: Population characteristics ages 17–22 |
| 7 | Table 3.2: Population ages 17–22 |
| 8 | Senior population |
| 8 | Figure 3.3: Population characteristics ages 65 and older |
| 8 | Table 3.3: Population ages 65 and older |
| 9 | Most-elderly population |
| 9 | Figure 3.4: Population characteristics ages 85 and older |
| 9 | Table 3.4: Population ages 85 and older |
| 10 | Part 4: References |
| 11 | Part 5: Annual population estimates and forecasts, 2020–50 |

State population forecast by age and sex: 2020–50

Part 1: Discussion of forecast model assumptions

We produce the Office of Financial Management’s state population forecast using a cohort-component model. This is a sophisticated demographic accounting system that starts with the most recent decennial census counts by single year of age and gender, moves the age and gender-specific cohorts forward in time, incorporates fertility, mortality and migration trends, and forecasts the total population by combining all these inputs. The November 2021 forecast incorporates updated forecast base data, a new forecast horizon, and revisions to the assumptions we used in the 2020 forecast model. Updated base data was only partially released at the time of our forecast. We will revise the base as more data becomes available from the 2020 census.

This document provides annual age and sex-specific population forecasts¹ from 2020–50. The most recent decennial census serves as the population base. The 2021 figures in this report are constrained to OFM’s April 1 postcensal population estimates and vital statistics data from the Washington State Department of Health. The forecast years are 2022-50.

Fertility: The Total Fertility Rate (the average number of births to women between ages 15 and 45) is at historic lows and we expect that to continue, consistent with national trends. Based on the historical relationship between Washington’s TFR and the United States as a whole, the forecast transitions to a TFR of 1.77 from the current TFR of 1.61. This is in line with the U.S. Census Bureau’s 2017 forecasted trend in fertility. Historically, the increase in women’s labor force participation and educational attainment has played a major role in the decline of TFRs over time. Economic factors such as the recent recessions, wage stagnation and student loan debt may also be contributing to delayed childbearing and smaller families. We can see birth delays in the age-specific fertility rates. For example, rates for 15 to 19-year-old women have dropped dramatically over the past decade.

Recent decreases in birth rates have caused births to decline for the past five years. Between 2020 and 2021, approximately 82,800 births occurred in Washington. This is about 2,000 less than the previous year. As the population grows and the state continues to attract migrants at the working ages, the number of births is forecast to grow, reaching 92,700 per year by 2035 and 102,100 by 2050. Washington fertility rates are highly influenced by migration, namely the state’s Hispanic population and movers from overseas.

Mortality: The state forecast model uses life expectancy at birth to establish rates of mortality for the population. Historically, Washington has higher life expectancy at birth than the United States as a whole, and we expect this trend to continue. We project Washington’s life expectancy using trends for each sex over the past decade. We project that male life expectancy will continue increasing

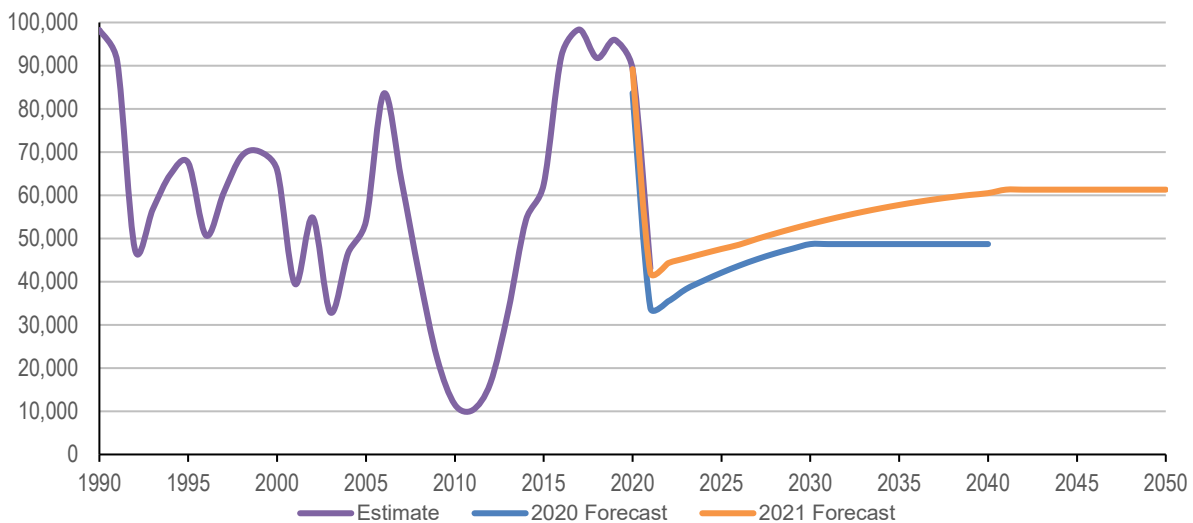
¹ *Population estimates* are figures developed for the current or prior years. Estimates are largely developed from administrative data sets that reflect population change. The assumptions in population estimates generally reflect statistically based and ratio-based relationships between population and indicator data such as housing, tax filers or voters. Thus, estimates are based on actual data and the assumption that previously established relationships will continue. *Population forecasts* are future population expectations. While growth assumptions are usually developed from prior growth trends, the forecast figures are not grounded on actual events and current data. Population forecasts are often developed from forecasts of specific data sets related to population change.

faster than female life expectancy, rising from 78.8 years of age in 2020 to 84 years in 2050, while females are projected to reach a life expectancy of 86.1 years of age in 2050, up from 82.8 years. To account for near-term deaths due to COVID-19, 2022 life expectancies were reduced by 2.25 years for males and 1.44 for females. While experts have long accepted that females outlive males, the gender gap has narrowed in major developed countries over the past two decades. This is mostly due to lifestyle changes and advances in medicine (Mayhew & Smith, 2012).

Even with life expectancy increases, deaths are projected to occur at an increasing rate. As Washington’s population continues to age, the state will experience higher mortality. Washington’s death rate is projected to rise from 7.7 deaths per 1,000 people in 2020 to 8.6 in 2030 and 10.1 by 2050.

Net migration: Net migration is an important, but difficult-to-predict component of population change. Although migration typically follows a cyclical pattern related to periods of economic expansion and contraction, some migration (such as military and retiree movement) is not entirely economic. To forecast near-term migration (five to seven years out), OFM uses an economic model that weighs Washington’s relative attractiveness to job seekers against California and other states. We transition near-term migration to the long-term expectation over a period of several years. For the present forecast, we applied a steep downwards adjustment to near-term migration to account for pandemic effects, the economic recession, and recent changes in federal immigration policy.

Figure 1.1: Actual, estimated and predicted net migration, 1990–2050



We present estimated and predicted net migration values in Figure 1.1. The net migration estimate for 2021 is 42,119. That’s over 8,000 people higher than last year’s forecast. The migration estimate for 2021 is the lowest since 2013. As we transition to a 2020 census-based forecast and add a decade to our forecast horizon, our forecast model relies less on the low migration trends from the 1980s and relies more on the higher recent migration trends of the 2010s. As a result of those model changes, there is higher predicted migration throughout the forecast period. Our forecast assumes that our current lower level of migration (due to the pandemic and pandemic-related unemployment) will slowly increase until 2040 when we will hold the long-term annual migration

assumption of 61,300 constant for the rest of the forecast horizon. For the 2025–35 period, net migration is over 28,900 people higher than the previous forecast. Our long-term (30-year) migration assumption for the 2040-2050 period is 12,600 higher than our prior long-term (30-year) migration assumption of 48,700 for the 2030-2040 period last year.

Part 2: Discussion of state population change

The components of population change are births, deaths, and migration. Natural increase is the number of births minus the number of deaths. Net migration is the difference between in- and out-migration. The dynamic nature of population change in Washington is shown in Figure 2.1, with additional detail in Table 2.1. Between 2020 and 2050, we expect Washington's population to grow by about 2,050,500 people, reaching 9,757,600 in 2050. Approximately 82% (1,672,500 people) of the increase is due to net migration with the other 18% (378,000 people) due to natural increase.

We expect natural increase to decline from about 26,300 in 2020 to 4,100 by 2050. While births are projected to gradually increase over the forecast horizon, the number of deaths will rise sharply with the aging of the baby boomer generation. In the future, state population growth will become more dependent on migration as natural increase moderates.

Figure 2.1: Components of population change by decade, 1980–2050

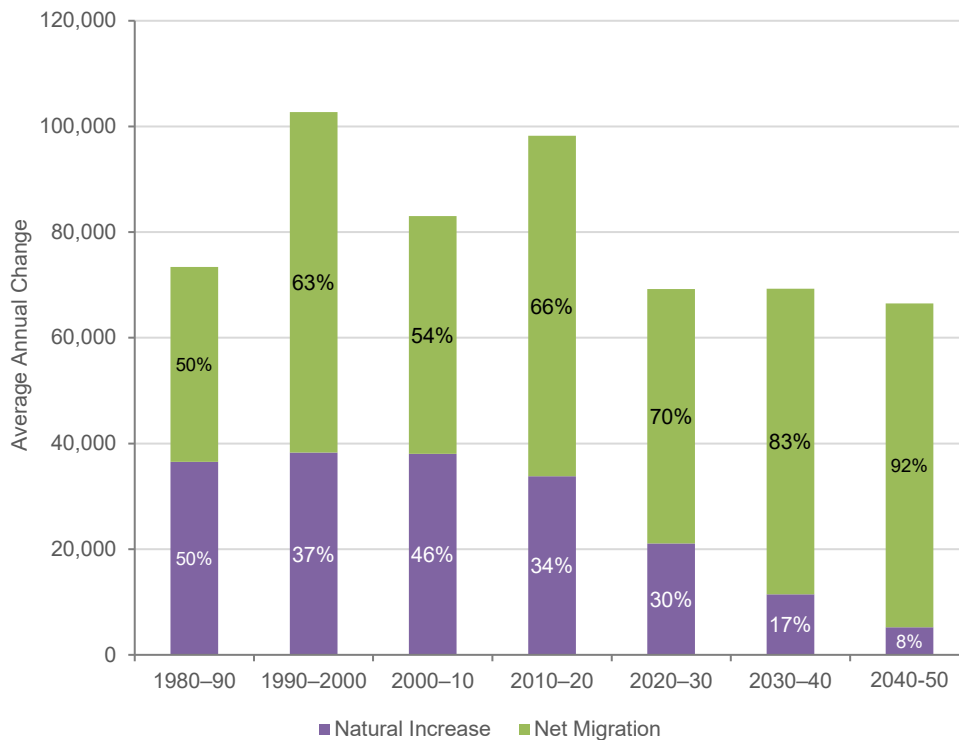


Table 2.1: Components of population change, 2010–50

| | April 1 Population at End of Period | Population Change | | Components of Change from Previous Period | | | | | | |
|----------------|--|-------------------|------------|---|-------|------------------|-------|------------------|------------------|-------|
| | | | | Births | | Deaths | | Natural Increase | Net Migration | |
| | | Number | Percentage | Number | Rate | Number | Rate | Number | Number | Rate |
| 2010–11 | 6,772,395 | 47,855 | 0.71 | 86,383 | 12.80 | 48,786 | 7.23 | 37,597 | 10,258 | 1.52 |
| 2011–12 | 6,826,826 | 54,431 | 0.80 | 87,134 | 12.81 | 49,231 | 7.24 | 37,903 | 16,528 | 2.43 |
| 2012–13 | 6,896,112 | 69,286 | 1.01 | 87,250 | 12.72 | 51,109 | 7.45 | 36,141 | 33,145 | 4.83 |
| 2013–14 | 6,986,681 | 90,569 | 1.31 | 87,026 | 12.54 | 50,711 | 7.31 | 36,315 | 54,254 | 7.82 |
| 2014–15 | 7,084,858 | 98,177 | 1.41 | 88,479 | 12.58 | 52,848 | 7.51 | 35,631 | 62,546 | 8.89 |
| 2010–15 | | 360,318 | | 436,272 | | 252,685 | | 183,587 | 176,731 | |
| 2015–16 | 7,212,325 | 127,467 | 1.80 | 89,819 | 12.56 | 54,661 | 7.65 | 35,158 | 92,309 | 12.91 |
| 2016–17 | 7,344,285 | 131,960 | 1.83 | 89,664 | 12.32 | 56,075 | 7.70 | 33,589 | 98,371 | 13.52 |
| 2017–18 | 7,467,033 | 122,748 | 1.67 | 87,346 | 11.79 | 56,372 | 7.61 | 30,974 | 91,774 | 12.39 |
| 2018–19 | 7,591,516 | 124,483 | 1.67 | 85,708 | 11.38 | 57,205 | 7.60 | 28,503 | 95,980 | 12.75 |
| 2019–20 | 7,707,047 | 115,531 | 1.52 | 84,843 | 11.09 | 58,520 | 7.65 | 26,323 | 89,208 | 11.66 |
| 2015–20 | | 622,189 | | 437,380 | | 282,833 | | 154,547 | 467,642 | |
| 2020–21 | 7,766,975 | 59,928 | 0.78 | 82,848 | 10.71 | 65,039 | 8.41 | 17,809 | 42,119 | 5.44 |
| 2021–22 | 7,828,148 | 61,173 | 0.79 | 84,570 | 10.85 | 67,683 | 8.68 | 16,887 | 44,286 | 5.68 |
| 2022–23 | 7,899,046 | 70,898 | 0.91 | 85,328 | 10.85 | 59,860 | 7.61 | 25,468 | 45,430 | 5.78 |
| 2023–24 | 7,970,302 | 71,256 | 0.90 | 86,056 | 10.85 | 61,325 | 7.73 | 24,731 | 46,525 | 5.86 |
| 2024–25 | 8,041,743 | 71,441 | 0.90 | 86,702 | 10.83 | 62,832 | 7.85 | 23,870 | 47,571 | 5.94 |
| 2020–25 | | 334,696 | | 425,504 | | 316,739 | | 108,765 | 225,931 | |
| 2025–26 | 8,113,136 | 71,393 | 0.89 | 87,224 | 10.80 | 64,398 | 7.97 | 22,826 | 48,567 | 6.01 |
| 2026–27 | 8,184,752 | 71,616 | 0.88 | 87,759 | 10.77 | 66,041 | 8.10 | 21,718 | 49,898 | 6.12 |
| 2027–28 | 8,256,407 | 71,655 | 0.88 | 88,338 | 10.75 | 67,799 | 8.25 | 20,539 | 51,116 | 6.22 |
| 2028–29 | 8,327,864 | 71,457 | 0.87 | 88,923 | 10.72 | 69,732 | 8.41 | 19,191 | 52,266 | 6.30 |
| 2029–30 | 8,399,102 | 71,238 | 0.86 | 89,507 | 10.70 | 71,618 | 8.56 | 17,889 | 53,349 | 6.38 |
| 2025–30 | | 357,359 | | 441,751 | | 339,588 | | 102,163 | 255,196 | |
| 2030–31 | 8,470,088 | 70,986 | 0.85 | 90,067 | 10.68 | 73,446 | 8.71 | 16,621 | 54,365 | 6.45 |
| 2031–32 | 8,540,885 | 70,797 | 0.84 | 90,655 | 10.66 | 75,172 | 8.84 | 15,483 | 55,314 | 6.50 |
| 2032–33 | 8,611,021 | 70,136 | 0.82 | 91,310 | 10.65 | 77,371 | 9.02 | 13,939 | 56,197 | 6.55 |
| 2033–34 | 8,680,598 | 69,577 | 0.81 | 91,985 | 10.64 | 79,420 | 9.19 | 12,565 | 57,012 | 6.59 |
| 2034–35 | 8,749,819 | 69,221 | 0.80 | 92,695 | 10.64 | 81,234 | 9.32 | 11,461 | 57,760 | 6.63 |
| 2030–35 | | 350,717 | | 456,712 | | 386,643 | | 70,069 | 280,648 | |
| 2035–36 | 8,818,703 | 68,884 | 0.79 | 93,435 | 10.64 | 82,992 | 9.45 | 10,443 | 58,441 | 6.65 |
| 2036–37 | 8,887,396 | 68,693 | 0.78 | 94,251 | 10.65 | 84,614 | 9.56 | 9,637 | 59,056 | 6.67 |
| 2037–38 | 8,955,926 | 68,530 | 0.77 | 95,122 | 10.66 | 86,195 | 9.66 | 8,927 | 59,603 | 6.68 |
| 2038–39 | 9,024,194 | 68,268 | 0.76 | 95,950 | 10.67 | 87,765 | 9.76 | 8,185 | 60,083 | 6.68 |
| 2039–40 | 9,092,210 | 68,016 | 0.75 | 96,727 | 10.68 | 89,207 | 9.85 | 7,520 | 60,496 | 6.68 |
| 2035–40 | | 342,391 | | 475,485 | | 430,773 | | 44,712 | 297,679 | |
| 2040–41 | 9,160,401 | 68,191 | 0.75 | 97,477 | 10.68 | 90,586 | 9.93 | 6,891 | 61,300 | 6.72 |
| 2041–42 | 9,228,097 | 67,696 | 0.74 | 98,208 | 10.68 | 91,812 | 9.99 | 6,396 | 61,300 | 6.67 |
| 2042–43 | 9,295,370 | 67,273 | 0.73 | 98,895 | 10.68 | 92,922 | 10.03 | 5,973 | 61,300 | 6.62 |
| 2043–44 | 9,362,242 | 66,872 | 0.72 | 99,510 | 10.67 | 93,938 | 10.07 | 5,572 | 61,300 | 6.57 |
| 2044–45 | 9,428,796 | 66,554 | 0.71 | 100,074 | 10.65 | 94,820 | 10.09 | 5,254 | 61,300 | 6.52 |
| 2040–45 | | 336,586 | | 494,164 | | 464,078 | | 30,086 | 306,500 | |
| 2045–46 | 9,495,021 | 66,225 | 0.7 | 100,602 | 10.63 | 95,677 | 10.11 | 4,925 | 61,300 | 6.48 |
| 2046–47 | 9,560,968 | 65,947 | 0.69 | 101,054 | 10.61 | 96,407 | 10.12 | 4,647 | 61,300 | 6.43 |
| 2047–48 | 9,626,684 | 65,716 | 0.69 | 101,424 | 10.57 | 97,008 | 10.11 | 4,416 | 61,300 | 6.39 |
| 2048–49 | 9,692,186 | 65,502 | 0.68 | 101,762 | 10.53 | 97,560 | 10.1 | 4,202 | 61,300 | 6.35 |
| 2049–50 | 9,757,560 | 65,374 | 0.67 | 102,087 | 10.5 | 98,013 | 10.08 | 4,074 | 61,300 | 6.3 |
| 2045–50 | | 328,764 | | 506,929 | | 484,665 | | 22,264 | 306,500 | |
| 2020–50 | | 2,050,513 | | 2,800,545 | | 2,422,486 | | 378,059 | 1,672,454 | |

Notes: 1) Unrounded data should not be considered accurate to the last digit. 2) Rates computed per 1,000 population at midpoint of time period. 3) Totals may not add due to rounding.

Part 3: Discussion of age-specific populations

School-age population

People ages 5 through 17 represent the school-age population in kindergarten through 12th grade. There are an estimated 1,236,200 young people ages 5 to 17 in 2020. The school-age population has increased lately after a period of relatively little change during the previous decade. We expect this trend to continue, with an average annual gain of approximately 4,200 people per year through 2025, which is when we expect the population to reach 1,257,000. This growth is partly due to the baby boomer generation’s grandchildren reaching school-age (the “third wave” of the baby boom). By 2050, the number of school-age people will be about 1,374,600.

Figure 3.1: Population characteristics ages 5–17

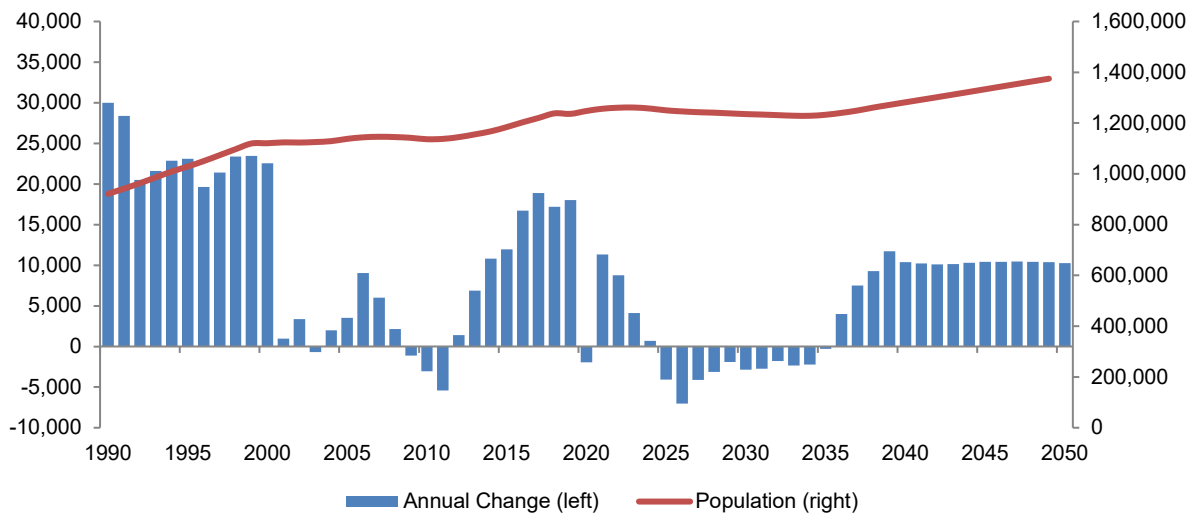


Table 3.1: Population ages 5–17

| Year | Year | Year | Year | Year | Year | Year | Year |
|-----------|-----------|-----------|-----------|-----------|-----------|------|------|
| 1990 | 2001 | 2011 | 2021 | 2031 | 2041 | | |
| 892,690 | 1,120,486 | 1,136,282 | 1,247,520 | 1,235,251 | 1,281,692 | | |
| 1991 | 2002 | 2012 | 2022 | 2032 | 2042 | | |
| 921,073 | 1,123,863 | 1,137,684 | 1,256,289 | 1,233,448 | 1,291,801 | | |
| 1992 | 2003 | 2013 | 2023 | 2033 | 2043 | | |
| 941,571 | 1,123,183 | 1,144,565 | 1,260,393 | 1,231,097 | 1,301,959 | | |
| 1993 | 2004 | 2014 | 2024 | 2034 | 2044 | | |
| 963,176 | 1,125,174 | 1,155,385 | 1,261,073 | 1,228,889 | 1,312,272 | | |
| 1994 | 2005 | 2015 | 2025 | 2035 | 2045 | | |
| 986,021 | 1,128,718 | 1,167,346 | 1,256,987 | 1,228,608 | 1,322,683 | | |
| 1995 | 2006 | 2016 | 2026 | 2036 | 2046 | | |
| 1,009,134 | 1,137,756 | 1,184,072 | 1,249,960 | 1,232,603 | 1,333,117 | | |
| 1996 | 2007 | 2017 | 2027 | 2037 | 2047 | | |
| 1,028,785 | 1,143,750 | 1,202,949 | 1,245,847 | 1,240,102 | 1,343,559 | | |
| 1997 | 2008 | 2018 | 2028 | 2038 | 2048 | | |
| 1,050,205 | 1,145,885 | 1,220,135 | 1,242,725 | 1,249,379 | 1,353,992 | | |
| 1998 | 2009 | 2019 | 2029 | 2039 | 2049 | | |
| 1,073,564 | 1,144,749 | 1,238,157 | 1,240,810 | 1,261,093 | 1,364,375 | | |
| 1999 | 2010 | 2020 | 2030 | 2040 | 2050 | | |
| 1,097,002 | 1,141,697 | 1,236,198 | 1,237,975 | 1,271,472 | 1,374,628 | | |
| 2000 | 1,119,533 | | | | | | |

Note: Departure from trend in 2020 is due to the partial rebasing of the forecast to 2020.

College-age population

People ages 17 through 22 comprise people entering the labor force, young workers and the majority of students in postsecondary institutions. There are an estimated 579,800 people ages 17 through 22 in 2020. We expect the number of people in this age group to increase by 1,700 people per year through 2025, when the population will reach 588,100. After 2025, this population is expected to grow by an additional 50,800 people, reaching 638,900 by 2050, with most of the growth between 2025 to 2030 and 2042 to 2050.

Figure 3.2: Population characteristics ages 17–22

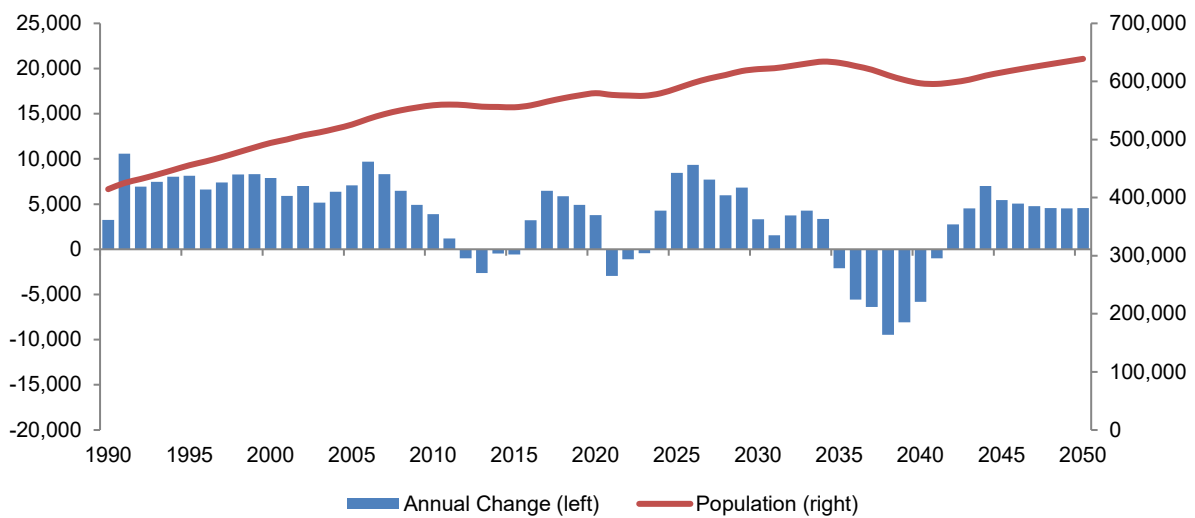


Table 3.2: Population ages 17–22

| Year | Year | Year | Year | Year | Year | Year | Year | Year | Year | | |
|------|---------|------|---------|------|---------|------|---------|------|---------|------|---------|
| 1990 | 414,577 | 2001 | 500,143 | 2011 | 560,216 | 2021 | 576,875 | 2031 | 622,790 | 2041 | 595,776 |
| 1991 | 425,172 | 2002 | 507,153 | 2012 | 559,213 | 2022 | 575,770 | 2032 | 626,553 | 2042 | 598,543 |
| 1992 | 432,118 | 2003 | 512,313 | 2013 | 556,594 | 2023 | 575,338 | 2033 | 630,844 | 2043 | 603,058 |
| 1993 | 439,581 | 2004 | 518,680 | 2014 | 556,134 | 2024 | 579,616 | 2034 | 634,211 | 2044 | 610,046 |
| 1994 | 447,614 | 2005 | 525,768 | 2015 | 555,542 | 2025 | 588,066 | 2035 | 632,103 | 2045 | 615,498 |
| 1995 | 455,764 | 2006 | 535,454 | 2016 | 558,772 | 2026 | 597,422 | 2036 | 626,545 | 2046 | 620,554 |
| 1996 | 462,361 | 2007 | 543,761 | 2017 | 565,235 | 2027 | 605,143 | 2037 | 620,157 | 2047 | 625,319 |
| 1997 | 469,760 | 2008 | 550,250 | 2018 | 571,104 | 2028 | 611,120 | 2038 | 610,677 | 2048 | 629,865 |
| 1998 | 478,026 | 2009 | 555,147 | 2019 | 576,035 | 2029 | 617,934 | 2039 | 602,603 | 2049 | 634,384 |
| 1999 | 486,328 | 2010 | 559,017 | 2020 | 579,817 | 2030 | 621,246 | 2040 | 596,792 | 2050 | 638,936 |
| 2000 | 494,223 | | | | | | | | | | |

Note: Departure from trend in 2020 is due to the partial rebasing of the forecast to 2020.

Older adult population

Washington’s population is aging. This major demographic development will have important implications for policymaking and planning at all levels of government. In 2020, there are about 1,295,900 people ages 65 and older. This represents 17% of Washington’s total population. By 2050, we forecast that the elderly population will reach 2,281,200. This represents 23% of the state’s total population. Most of the growth will occur between now and 2030. The sharp spike in the 65-and-older population in 2011 corresponds to a similarly sharp spike in births starting in 1946, exactly one year after American service members returned from World War II. These children of 1946 turned 65 in 2011, leading the baby boomer generation into retirement.

Figure 3.3: Population characteristics ages 65 and older

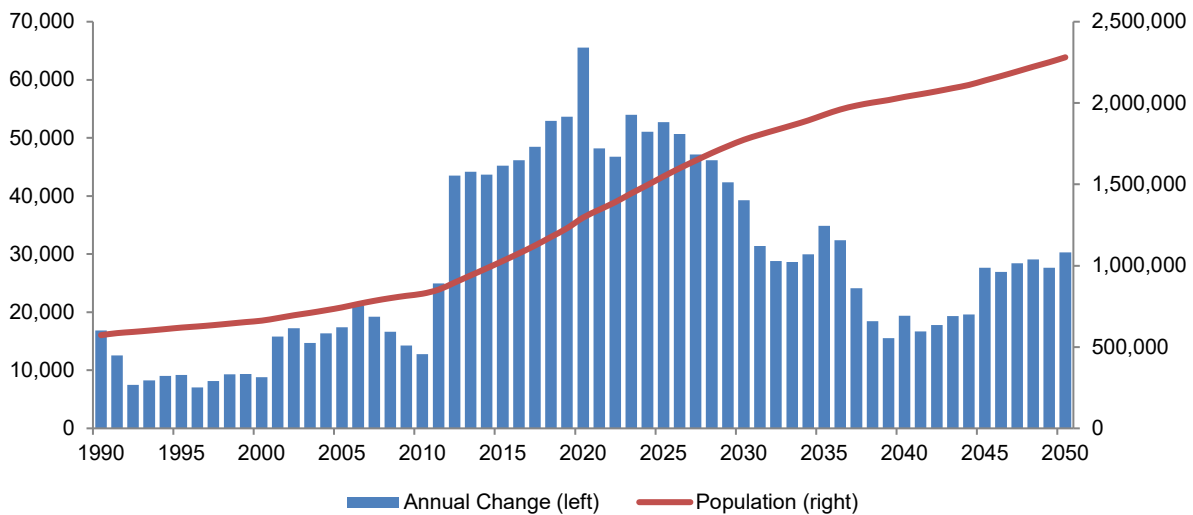


Table 3.3: Population ages 65 and older

| Year | Year | Year | Year | Year | Year | Year | Year | Year | Year | | |
|------|---------|------|---------|------|-----------|------|-----------|------|-----------|------|-----------|
| 1990 | 572,914 | 2001 | 677,931 | 2011 | 852,624 | 2021 | 1,344,100 | 2031 | 1,805,577 | 2041 | 2,054,392 |
| 1991 | 585,458 | 2002 | 695,188 | 2012 | 896,107 | 2022 | 1,390,868 | 2032 | 1,834,403 | 2042 | 2,072,175 |
| 1992 | 592,968 | 2003 | 709,905 | 2013 | 940,287 | 2023 | 1,444,840 | 2033 | 1,863,059 | 2043 | 2,091,528 |
| 1993 | 601,202 | 2004 | 726,276 | 2014 | 983,975 | 2024 | 1,495,881 | 2034 | 1,893,006 | 2044 | 2,111,128 |
| 1994 | 610,213 | 2005 | 743,666 | 2015 | 1,029,178 | 2025 | 1,548,587 | 2035 | 1,927,881 | 2045 | 2,138,755 |
| 1995 | 619,382 | 2006 | 764,778 | 2016 | 1,075,310 | 2026 | 1,599,231 | 2036 | 1,960,252 | 2046 | 2,165,667 |
| 1996 | 626,444 | 2007 | 783,988 | 2017 | 1,123,796 | 2027 | 1,646,389 | 2037 | 1,984,346 | 2047 | 2,194,097 |
| 1997 | 634,606 | 2008 | 800,598 | 2018 | 1,176,728 | 2028 | 1,692,548 | 2038 | 2,002,793 | 2048 | 2,223,182 |
| 1998 | 643,934 | 2009 | 814,880 | 2019 | 1,230,384 | 2029 | 1,734,915 | 2039 | 2,018,321 | 2049 | 2,250,846 |
| 1999 | 653,311 | 2010 | 827,677 | 2020 | 1,295,911 | 2030 | 1,774,188 | 2040 | 2,037,721 | 2050 | 2,281,154 |
| 2000 | 662,142 | | | | | | | | | | |

Note: Departure from trend in 2020 is due to the partial rebasing of the forecast to 2020.

Oldest adult population

Providing for the long-term care needs of the population ages 85 and older will have important fiscal implications for Washington and the nation. We expect this population, about 141,400 in 2020, to increase by 417,100 people, reaching 558,500 by 2050. Much of this growth will occur after 2030 as the baby boom cohort starts to enter the older adults age group, with a 78,200 person increase from 2020–30 and a 338,900 person increase from 2030–50.

Figure 3.4: Population characteristics ages 85 and older

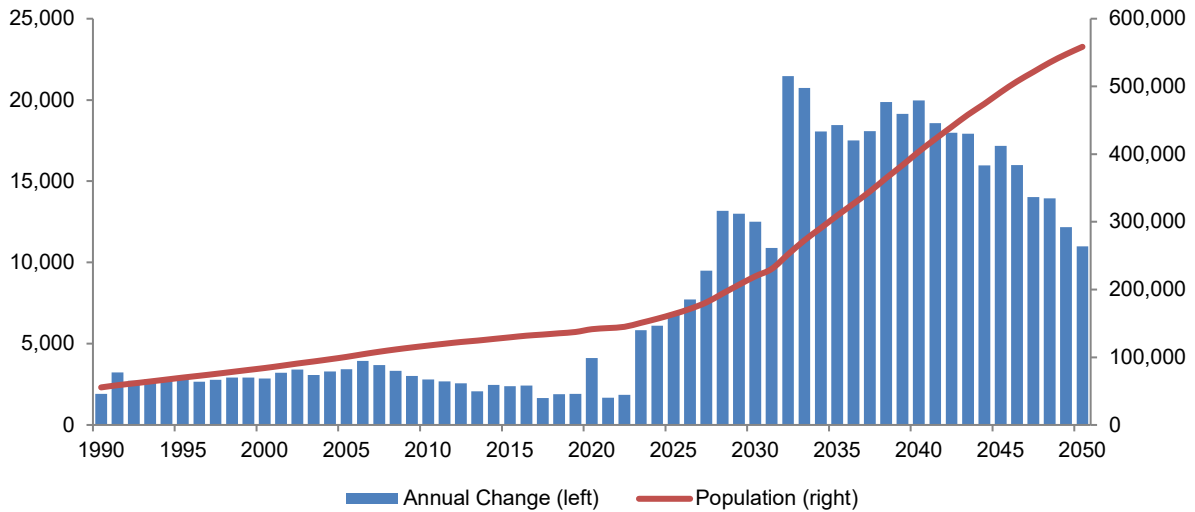


Table 3.4: Population ages 85 and older

| Year | Year | Year | Year | Year | Year | Year | Year | Year | Year | | |
|------|--------|------|---------|------|---------|------|---------|------|---------|------|---------|
| 1990 | 55,463 | 2001 | 87,304 | 2011 | 119,945 | 2021 | 143,092 | 2031 | 230,487 | 2041 | 422,339 |
| 1991 | 58,688 | 2002 | 90,713 | 2012 | 122,517 | 2022 | 144,944 | 2032 | 251,947 | 2042 | 440,323 |
| 1992 | 61,416 | 2003 | 93,789 | 2013 | 124,578 | 2023 | 150,770 | 2033 | 272,682 | 2043 | 458,237 |
| 1993 | 64,212 | 2004 | 97,080 | 2014 | 127,050 | 2024 | 156,873 | 2034 | 290,749 | 2044 | 474,205 |
| 1994 | 67,088 | 2005 | 100,509 | 2015 | 129,433 | 2025 | 163,697 | 2035 | 309,197 | 2045 | 491,381 |
| 1995 | 69,983 | 2006 | 104,449 | 2016 | 131,850 | 2026 | 171,423 | 2036 | 326,709 | 2046 | 507,375 |
| 1996 | 72,635 | 2007 | 108,139 | 2017 | 133,502 | 2027 | 180,922 | 2037 | 344,781 | 2047 | 521,390 |
| 1997 | 75,406 | 2008 | 111,473 | 2018 | 135,389 | 2028 | 194,099 | 2038 | 364,647 | 2048 | 535,326 |
| 1998 | 78,315 | 2009 | 114,480 | 2019 | 137,295 | 2029 | 207,092 | 2039 | 383,781 | 2049 | 547,502 |
| 1999 | 81,232 | 2010 | 117,271 | 2020 | 141,421 | 2030 | 219,595 | 2040 | 403,759 | 2050 | 558,487 |
| 2000 | 84,083 | | | | | | | | | | |

Note: Departure from trend in 2020 is due to the partial rebasing of the forecast to 2020.

Part 4: References

Mayhew, L., & Smith, D. (2012). Gender convergence in human survival and the postponement of death. Actuarial Research Paper No. 200. Retrieved from <http://openaccess.city.ac.uk/2331/1/200ARP.pdf>.

U.S. Census Bureau (2014). National Population Projections [Data files and code book]. Retrieved from <https://www.census.gov/data/datasets/2014/demo/popproj/2014-popproj.html>.

U.S. Census Bureau (2017). National Population Projections [Data files and code book]. Retrieved from <https://www.census.gov/data/datasets/2017/demo/popproj/2017-popproj.html>.

Part 5: Annual population estimates and forecasts, 2020–50

The following tables present annual population estimates and forecasts by age and sex for the years 2020–50. Figures for 2020 reflect 2010-based data constrained to newly released census 2020 totals by age. Figures for years 2021 represent OFM’s postcensal estimates. The forecast years are 2022–50.

**Summary Population Report: 2020-2021
State of Washington**

| |
|----------------|
| Infants |
| Births |
| 82,848 |
| Deaths |
| 504 |

| Age | 2020 Base Population | | | Deaths | | | Net Migration | | | 2021 Estimated Population | | |
|--------------|----------------------|-----------|-----------|--------|--------|--------|---------------|--------|--------|---------------------------|-----------|-----------|
| | Total | Male | Female | Total | Male | Female | Total | Male | Female | Total | Male | Female |
| 0 | 83,920 | 42,944 | 40,976 | 941 | 521 | 420 | 519 | 265 | 254 | 82,344 | 42,136 | 40,208 |
| 1-4 | 360,859 | 184,577 | 176,282 | 151 | 85 | 66 | 3,389 | 1,734 | 1,655 | 352,557 | 180,331 | 172,226 |
| 5-9 | 477,010 | 243,963 | 233,047 | 54 | 30 | 24 | 3,534 | 1,807 | 1,727 | 480,221 | 245,606 | 234,615 |
| 10-14 | 482,036 | 246,893 | 235,143 | 58 | 32 | 26 | 2,600 | 1,352 | 1,248 | 486,011 | 248,735 | 237,276 |
| 15-19 | 467,422 | 238,912 | 228,510 | 202 | 145 | 57 | 3,584 | 1,852 | 1,732 | 467,405 | 238,969 | 228,436 |
| 20-24 | 502,930 | 257,211 | 245,719 | 411 | 303 | 108 | 6,057 | 2,964 | 3,093 | 502,213 | 256,987 | 245,226 |
| 25-29 | 551,368 | 281,083 | 270,285 | 513 | 365 | 148 | 6,077 | 3,052 | 3,025 | 547,883 | 279,345 | 268,538 |
| 30-34 | 539,176 | 276,744 | 262,432 | 570 | 386 | 184 | 4,147 | 2,153 | 1,994 | 547,539 | 280,632 | 266,907 |
| 35-39 | 534,628 | 272,162 | 262,466 | 708 | 449 | 259 | 2,544 | 1,325 | 1,219 | 539,311 | 275,001 | 264,310 |
| 40-44 | 484,771 | 245,293 | 239,478 | 900 | 553 | 347 | 1,649 | 849 | 800 | 499,129 | 252,566 | 246,563 |
| 45-49 | 468,399 | 236,158 | 232,241 | 1,420 | 870 | 550 | 1,384 | 710 | 674 | 458,744 | 231,029 | 227,715 |
| 50-54 | 472,104 | 237,573 | 234,531 | 2,178 | 1,337 | 841 | 1,285 | 645 | 640 | 481,831 | 242,739 | 239,092 |
| 55-59 | 496,963 | 245,999 | 250,964 | 3,345 | 2,076 | 1,269 | 1,316 | 631 | 685 | 485,316 | 240,826 | 244,490 |
| 60-64 | 489,550 | 238,971 | 250,579 | 4,682 | 2,808 | 1,874 | 1,463 | 653 | 810 | 492,371 | 240,516 | 251,855 |
| 65-69 | 437,550 | 208,790 | 228,760 | 6,240 | 3,584 | 2,656 | 1,283 | 648 | 635 | 448,682 | 214,272 | 234,410 |
| 70-74 | 351,101 | 166,879 | 184,222 | 7,648 | 4,299 | 3,349 | 686 | 342 | 344 | 370,830 | 175,739 | 195,091 |
| 75-79 | 228,157 | 106,485 | 121,672 | 7,917 | 4,319 | 3,598 | 350 | 162 | 188 | 237,822 | 110,788 | 127,034 |
| 80-84 | 137,682 | 61,720 | 75,962 | 7,880 | 4,085 | 3,795 | 175 | 71 | 104 | 143,674 | 64,595 | 79,079 |
| 85+ | 141,421 | 53,667 | 87,754 | 19,221 | 7,859 | 11,362 | 77 | 32 | 45 | 143,092 | 54,771 | 88,321 |
| Total | 7,707,047 | 3,846,024 | 3,861,023 | 65,039 | 34,106 | 30,933 | 42,119 | 21,247 | 20,872 | 7,766,975 | 3,875,583 | 3,891,392 |

Fertility Measures: 2020-2021

| Age | Females | Births | 1yr Rate |
|--------------|-----------|--------|----------|
| 15-19 | 228,529 | 2,546 | .0111 |
| 20-24 | 245,513 | 12,968 | .0528 |
| 25-29 | 269,383 | 23,226 | .0862 |
| 30-34 | 264,611 | 26,409 | .0998 |
| 35-39 | 263,360 | 14,647 | .0556 |
| 40-44 | 242,998 | 3,052 | .0126 |
| Total | 1,514,393 | 82,848 | .3182 |

Summary Measures

| | 2020 | 2021 |
|-------------------------------|------|-------|
| Child Dependency Ratio | . | 35.49 |
| Aged Dependency Ratio | . | 28.35 |
| Total Dependency Ratio | . | 63.84 |
| Sex Ratio | . | 99.59 |
| Male Life Expectancy | . | 77.22 |
| Female Life Expectancy | . | 81.65 |
| Total Fertility | . | 1.59 |
| General Fertility | . | 54.71 |

**Summary Population Report: 2021-2022
State of Washington**

| |
|----------------|
| Infants |
| Births |
| 84,570 |
| Deaths |
| 523 |

| Age | 2021 Base Population | | | Deaths | | | Net Migration | | | 2022 Estimated Population | | |
|--------------|----------------------|-----------|-----------|--------|--------|--------|---------------|--------|--------|---------------------------|-----------|-----------|
| | Total | Male | Female | Total | Male | Female | Total | Male | Female | Total | Male | Female |
| 0 | 82,344 | 42,136 | 40,208 | 959 | 537 | 422 | 533 | 272 | 261 | 84,047 | 43,003 | 41,044 |
| 1-4 | 352,557 | 180,331 | 172,226 | 152 | 86 | 66 | 3,472 | 1,776 | 1,696 | 344,009 | 175,953 | 168,056 |
| 5-9 | 480,221 | 245,606 | 234,615 | 58 | 34 | 24 | 3,731 | 1,908 | 1,823 | 480,746 | 245,873 | 234,873 |
| 10-14 | 486,011 | 248,735 | 237,276 | 60 | 34 | 26 | 2,749 | 1,428 | 1,321 | 487,937 | 249,508 | 238,429 |
| 15-19 | 467,405 | 238,969 | 228,436 | 209 | 149 | 60 | 3,741 | 1,931 | 1,810 | 473,904 | 242,528 | 231,376 |
| 20-24 | 502,213 | 256,987 | 245,226 | 417 | 310 | 107 | 6,345 | 3,107 | 3,238 | 499,357 | 255,545 | 243,812 |
| 25-29 | 547,883 | 279,345 | 268,538 | 520 | 374 | 146 | 6,329 | 3,179 | 3,150 | 542,592 | 276,272 | 266,320 |
| 30-34 | 547,539 | 280,632 | 266,907 | 592 | 404 | 188 | 4,428 | 2,295 | 2,133 | 560,067 | 286,701 | 273,366 |
| 35-39 | 539,311 | 275,001 | 264,310 | 724 | 463 | 261 | 2,694 | 1,405 | 1,289 | 540,112 | 275,872 | 264,240 |
| 40-44 | 499,129 | 252,566 | 246,563 | 945 | 586 | 359 | 1,783 | 918 | 865 | 513,469 | 260,152 | 253,317 |
| 45-49 | 458,744 | 231,029 | 227,715 | 1,411 | 871 | 540 | 1,424 | 730 | 694 | 458,406 | 230,741 | 227,665 |
| 50-54 | 481,831 | 242,739 | 239,092 | 2,259 | 1,401 | 858 | 1,376 | 692 | 684 | 485,570 | 244,778 | 240,792 |
| 55-59 | 485,316 | 240,826 | 244,490 | 3,327 | 2,089 | 1,238 | 1,346 | 647 | 699 | 474,701 | 235,701 | 239,000 |
| 60-64 | 492,371 | 240,516 | 251,855 | 4,792 | 2,905 | 1,887 | 1,544 | 689 | 855 | 492,363 | 240,709 | 251,654 |
| 65-69 | 448,682 | 214,272 | 234,410 | 6,515 | 3,784 | 2,731 | 1,380 | 696 | 684 | 457,707 | 218,831 | 238,876 |
| 70-74 | 370,830 | 175,739 | 195,091 | 8,274 | 4,691 | 3,583 | 757 | 377 | 380 | 376,198 | 177,810 | 198,388 |
| 75-79 | 237,822 | 110,788 | 127,034 | 8,430 | 4,644 | 3,786 | 380 | 176 | 204 | 260,585 | 121,193 | 139,392 |
| 80-84 | 143,674 | 64,595 | 79,079 | 8,346 | 4,393 | 3,953 | 193 | 80 | 113 | 151,434 | 68,296 | 83,138 |
| 85+ | 143,092 | 54,771 | 88,321 | 19,693 | 8,238 | 11,455 | 81 | 34 | 47 | 144,944 | 55,763 | 89,181 |
| Total | 7,766,975 | 3,875,583 | 3,891,392 | 67,683 | 35,993 | 31,690 | 44,286 | 22,340 | 21,946 | 7,828,148 | 3,905,229 | 3,922,919 |

Fertility Measures: 2021-2022

| Age | Females | Births | 1yr Rate |
|--------------|-----------|--------|----------|
| 15-19 | 229,959 | 2,602 | .0113 |
| 20-24 | 244,565 | 13,095 | .0536 |
| 25-29 | 267,400 | 23,404 | .0875 |
| 30-34 | 270,072 | 27,362 | .1013 |
| 35-39 | 264,248 | 14,920 | .0565 |
| 40-44 | 249,917 | 3,187 | .0128 |
| Total | 1,526,160 | 84,570 | .3230 |

Summary Measures

| | 2021 | 2022 |
|-------------------------------|-------|-------|
| Child Dependency Ratio | 35.49 | 35.44 |
| Aged Dependency Ratio | 28.35 | 29.26 |
| Total Dependency Ratio | 63.84 | 64.70 |
| Sex Ratio | 99.59 | 99.55 |
| Male Life Expectancy | 77.22 | 76.86 |
| Female Life Expectancy | 81.65 | 81.63 |
| Total Fertility | 1.59 | 1.61 |
| General Fertility | 54.71 | 55.41 |

**Summary Population Report: 2022-2023
State of Washington**

| Infants | |
|---------|--------|
| Births | Deaths |
| 85,328 | 453 |

| Age | 2022 Base Population | | | Deaths | | | Net Migration | | | 2023 Estimated Population | | |
|--------------|----------------------|------------------|------------------|---------------|---------------|---------------|---------------|---------------|---------------|---------------------------|------------------|------------------|
| | Total | Male | Female | Total | Male | Female | Total | Male | Female | Total | Male | Female |
| 0 | 84,047 | 43,003 | 41,044 | 837 | 457 | 380 | 558 | 285 | 273 | 84,875 | 43,437 | 41,438 |
| 1-4 | 344,009 | 175,953 | 168,056 | 127 | 70 | 57 | 3,470 | 1,775 | 1,695 | 340,647 | 174,234 | 166,413 |
| 5-9 | 480,746 | 245,873 | 234,873 | 50 | 28 | 22 | 3,820 | 1,953 | 1,867 | 477,467 | 244,195 | 233,272 |
| 10-14 | 487,937 | 249,508 | 238,429 | 52 | 28 | 24 | 2,822 | 1,465 | 1,357 | 489,016 | 249,904 | 239,112 |
| 15-19 | 473,904 | 242,528 | 231,376 | 180 | 126 | 54 | 3,869 | 1,998 | 1,871 | 483,574 | 248,020 | 235,554 |
| 20-24 | 499,357 | 255,545 | 243,812 | 352 | 259 | 93 | 6,455 | 3,161 | 3,294 | 495,049 | 252,914 | 242,135 |
| 25-29 | 542,592 | 276,272 | 266,320 | 439 | 310 | 129 | 6,412 | 3,216 | 3,196 | 537,108 | 272,980 | 264,128 |
| 30-34 | 560,067 | 286,701 | 273,366 | 516 | 346 | 170 | 4,633 | 2,398 | 2,235 | 571,669 | 292,725 | 278,944 |
| 35-39 | 540,112 | 275,872 | 264,240 | 623 | 391 | 232 | 2,757 | 1,440 | 1,317 | 541,605 | 276,831 | 264,774 |
| 40-44 | 513,469 | 260,152 | 253,317 | 835 | 508 | 327 | 1,874 | 966 | 908 | 526,566 | 267,466 | 259,100 |
| 45-49 | 458,406 | 230,741 | 227,665 | 1,205 | 727 | 478 | 1,455 | 745 | 710 | 465,227 | 234,224 | 231,003 |
| 50-54 | 485,570 | 244,778 | 240,792 | 1,960 | 1,190 | 770 | 1,421 | 715 | 706 | 483,337 | 243,395 | 239,942 |
| 55-59 | 474,701 | 235,701 | 239,000 | 2,798 | 1,720 | 1,078 | 1,348 | 649 | 699 | 465,874 | 231,771 | 234,103 |
| 60-64 | 492,363 | 240,709 | 251,654 | 4,120 | 2,442 | 1,678 | 1,582 | 708 | 874 | 492,192 | 240,831 | 251,361 |
| 65-69 | 457,707 | 218,831 | 238,876 | 5,727 | 3,246 | 2,481 | 1,440 | 728 | 712 | 464,381 | 222,553 | 241,828 |
| 70-74 | 376,198 | 177,810 | 198,388 | 7,216 | 3,978 | 3,238 | 789 | 392 | 397 | 385,762 | 182,373 | 203,389 |
| 75-79 | 260,585 | 121,193 | 139,392 | 7,913 | 4,238 | 3,675 | 431 | 201 | 230 | 279,827 | 129,984 | 149,843 |
| 80-84 | 151,434 | 68,296 | 83,138 | 7,586 | 3,895 | 3,691 | 208 | 87 | 121 | 164,100 | 74,208 | 89,892 |
| 85+ | 144,944 | 55,763 | 89,181 | 17,324 | 7,039 | 10,285 | 86 | 37 | 49 | 150,770 | 58,792 | 91,978 |
| Total | 7,828,148 | 3,905,229 | 3,922,919 | 59,860 | 30,998 | 28,862 | 45,430 | 22,919 | 22,511 | 7,899,046 | 3,940,837 | 3,958,209 |

Fertility Measures: 2022-2023

| Age | Females | Births | 1yr Rate |
|--------------|------------------|---------------|--------------|
| 15-19 | 233,518 | 2,651 | .0114 |
| 20-24 | 243,022 | 13,058 | .0538 |
| 25-29 | 265,195 | 23,290 | .0878 |
| 30-34 | 276,090 | 28,067 | .1017 |
| 35-39 | 264,479 | 14,984 | .0567 |
| 40-44 | 256,186 | 3,278 | .0128 |
| Total | 1,538,489 | 85,328 | .3241 |

Summary Measures

| | 2022 | 2023 |
|-------------------------------|-------|-------|
| Child Dependency Ratio | 35.44 | 35.36 |
| Aged Dependency Ratio | 29.26 | 30.30 |
| Total Dependency Ratio | 64.70 | 65.66 |
| Sex Ratio | 99.55 | 99.56 |
| Male Life Expectancy | 76.86 | 79.27 |
| Female Life Expectancy | 81.63 | 83.17 |
| Total Fertility | 1.61 | 1.62 |
| General Fertility | 55.41 | 55.46 |

**Summary Population Report: 2023-2024
State of Washington**

| |
|----------------|
| Infants |
| Births |
| 86,056 |
| Deaths |
| 453 |

| Age | 2023 Base Population | | | Deaths | | | Net Migration | | | 2024 Estimated Population | | |
|--------------|----------------------|-----------|-----------|--------|--------|--------|---------------|--------|--------|---------------------------|-----------|-----------|
| | Total | Male | Female | Total | Male | Female | Total | Male | Female | Total | Male | Female |
| 0 | 84,875 | 43,437 | 41,438 | 836 | 455 | 381 | 574 | 293 | 281 | 85,603 | 43,811 | 41,792 |
| 1-4 | 340,647 | 174,234 | 166,413 | 125 | 69 | 56 | 3,510 | 1,796 | 1,714 | 340,794 | 174,321 | 166,473 |
| 5-9 | 477,467 | 244,195 | 233,272 | 50 | 28 | 22 | 3,871 | 1,979 | 1,892 | 471,863 | 241,328 | 230,535 |
| 10-14 | 489,016 | 249,904 | 239,112 | 52 | 28 | 24 | 2,888 | 1,498 | 1,390 | 490,781 | 251,043 | 239,738 |
| 15-19 | 483,574 | 248,020 | 235,554 | 182 | 127 | 55 | 4,028 | 2,086 | 1,942 | 490,682 | 251,449 | 239,233 |
| 20-24 | 495,049 | 252,914 | 242,135 | 345 | 253 | 92 | 6,535 | 3,195 | 3,340 | 492,670 | 251,384 | 241,286 |
| 25-29 | 537,108 | 272,980 | 264,128 | 431 | 303 | 128 | 6,484 | 3,247 | 3,237 | 534,311 | 271,956 | 262,355 |
| 30-34 | 571,669 | 292,725 | 278,944 | 523 | 350 | 173 | 4,824 | 2,497 | 2,327 | 577,715 | 294,982 | 282,733 |
| 35-39 | 541,605 | 276,831 | 264,774 | 617 | 388 | 229 | 2,822 | 1,476 | 1,346 | 547,343 | 280,061 | 267,282 |
| 40-44 | 526,566 | 267,466 | 259,100 | 849 | 516 | 333 | 1,962 | 1,014 | 948 | 537,582 | 273,425 | 264,157 |
| 45-49 | 465,227 | 234,224 | 231,003 | 1,210 | 729 | 481 | 1,508 | 772 | 736 | 474,787 | 239,384 | 235,403 |
| 50-54 | 483,337 | 243,395 | 239,942 | 1,940 | 1,175 | 765 | 1,441 | 724 | 717 | 476,270 | 239,521 | 236,749 |
| 55-59 | 465,874 | 231,771 | 234,103 | 2,715 | 1,668 | 1,047 | 1,351 | 652 | 699 | 462,432 | 230,793 | 231,639 |
| 60-64 | 492,192 | 240,831 | 251,361 | 4,075 | 2,412 | 1,663 | 1,613 | 723 | 890 | 491,588 | 240,758 | 250,830 |
| 65-69 | 464,381 | 222,553 | 241,828 | 5,754 | 3,262 | 2,492 | 1,491 | 757 | 734 | 468,588 | 225,406 | 243,182 |
| 70-74 | 385,762 | 182,373 | 203,389 | 7,304 | 4,021 | 3,283 | 827 | 411 | 416 | 397,575 | 187,246 | 210,329 |
| 75-79 | 279,827 | 129,984 | 149,843 | 8,372 | 4,470 | 3,902 | 473 | 219 | 254 | 296,083 | 137,861 | 158,222 |
| 80-84 | 164,100 | 74,208 | 89,892 | 8,093 | 4,157 | 3,936 | 232 | 98 | 134 | 176,762 | 79,960 | 96,802 |
| 85+ | 150,770 | 58,792 | 91,978 | 17,852 | 7,329 | 10,523 | 91 | 39 | 52 | 156,873 | 61,944 | 94,929 |
| Total | 7,899,046 | 3,940,837 | 3,958,209 | 61,325 | 31,740 | 29,585 | 46,525 | 23,476 | 23,049 | 7,970,302 | 3,976,633 | 3,993,669 |

Fertility Measures: 2023-2024

| Age | Females | Births | 1yr Rate |
|--------------|-----------|--------|----------|
| 15-19 | 237,449 | 2,704 | .0114 |
| 20-24 | 241,757 | 13,032 | .0540 |
| 25-29 | 263,211 | 23,196 | .0881 |
| 30-34 | 280,776 | 28,642 | .1020 |
| 35-39 | 265,997 | 15,122 | .0568 |
| 40-44 | 261,606 | 3,360 | .0128 |
| Total | 1,550,796 | 86,056 | .3252 |

Summary Measures

| | 2023 | 2024 |
|-------------------------------|-------|-------|
| Child Dependency Ratio | 35.36 | 35.25 |
| Aged Dependency Ratio | 30.30 | 31.25 |
| Total Dependency Ratio | 65.66 | 66.50 |
| Sex Ratio | 99.56 | 99.57 |
| Male Life Expectancy | 79.27 | 79.45 |
| Female Life Expectancy | 83.17 | 83.27 |
| Total Fertility | 1.62 | 1.63 |
| General Fertility | 55.46 | 55.49 |

**Summary Population Report: 2024-2025
State of Washington**

| | |
|----------------|---------------|
| Infants | |
| Births | Deaths |
| 86,702 | 451 |

| Age | 2024 Base Population | | | Deaths | | | Net Migration | | | 2025 Estimated Population | | |
|--------------|----------------------|-----------|-----------|--------|--------|--------|---------------|--------|--------|---------------------------|-----------|-----------|
| | Total | Male | Female | Total | Male | Female | Total | Male | Female | Total | Male | Female |
| 0 | 85,603 | 43,811 | 41,792 | 833 | 453 | 380 | 591 | 302 | 289 | 86,251 | 44,143 | 42,108 |
| 1-4 | 340,794 | 174,321 | 166,473 | 126 | 70 | 56 | 3,580 | 1,832 | 1,748 | 342,725 | 175,322 | 167,403 |
| 5-9 | 471,863 | 241,328 | 230,535 | 48 | 26 | 22 | 3,896 | 1,992 | 1,904 | 464,130 | 237,378 | 226,752 |
| 10-14 | 490,781 | 251,043 | 239,738 | 52 | 28 | 24 | 2,954 | 1,534 | 1,420 | 493,740 | 252,597 | 241,143 |
| 15-19 | 490,682 | 251,449 | 239,233 | 183 | 128 | 55 | 4,168 | 2,159 | 2,009 | 496,358 | 254,166 | 242,192 |
| 20-24 | 492,670 | 251,384 | 241,286 | 341 | 250 | 91 | 6,625 | 3,235 | 3,390 | 491,461 | 250,761 | 240,700 |
| 25-29 | 534,311 | 271,956 | 262,355 | 422 | 297 | 125 | 6,575 | 3,298 | 3,277 | 533,656 | 271,855 | 261,801 |
| 30-34 | 577,715 | 294,982 | 282,733 | 522 | 348 | 174 | 4,953 | 2,556 | 2,397 | 577,919 | 294,107 | 283,812 |
| 35-39 | 547,343 | 280,061 | 267,282 | 618 | 387 | 231 | 2,907 | 1,522 | 1,385 | 554,718 | 284,476 | 270,242 |
| 40-44 | 537,582 | 273,425 | 264,157 | 862 | 523 | 339 | 2,040 | 1,055 | 985 | 542,692 | 275,956 | 266,736 |
| 45-49 | 474,787 | 239,384 | 235,403 | 1,224 | 737 | 487 | 1,568 | 805 | 763 | 488,008 | 246,505 | 241,503 |
| 50-54 | 476,270 | 239,521 | 236,749 | 1,896 | 1,146 | 750 | 1,446 | 725 | 721 | 467,731 | 235,040 | 232,691 |
| 55-59 | 462,432 | 230,793 | 231,639 | 2,660 | 1,635 | 1,025 | 1,367 | 663 | 704 | 467,192 | 233,763 | 233,429 |
| 60-64 | 491,588 | 240,758 | 250,830 | 4,036 | 2,386 | 1,650 | 1,642 | 736 | 906 | 486,575 | 238,605 | 247,970 |
| 65-69 | 468,588 | 225,406 | 243,182 | 5,759 | 3,268 | 2,491 | 1,530 | 779 | 751 | 472,659 | 228,123 | 244,536 |
| 70-74 | 397,575 | 187,246 | 210,329 | 7,444 | 4,076 | 3,368 | 868 | 430 | 438 | 410,012 | 192,984 | 217,028 |
| 75-79 | 296,083 | 137,861 | 158,222 | 8,780 | 4,689 | 4,091 | 510 | 237 | 273 | 313,742 | 146,110 | 167,632 |
| 80-84 | 176,762 | 79,960 | 96,802 | 8,625 | 4,425 | 4,200 | 254 | 106 | 148 | 188,477 | 85,227 | 103,250 |
| 85+ | 156,873 | 61,944 | 94,929 | 18,401 | 7,627 | 10,774 | 97 | 42 | 55 | 163,697 | 65,415 | 98,282 |
| Total | 7,970,302 | 3,976,633 | 3,993,669 | 62,832 | 32,499 | 30,333 | 47,571 | 24,008 | 23,563 | 8,041,743 | 4,012,533 | 4,029,210 |

Fertility Measures: 2024-2025

| Age | Females | Births | 1yr Rate |
|--------------|-----------|--------|----------|
| 15-19 | 240,771 | 2,752 | .0114 |
| 20-24 | 241,041 | 13,040 | .0542 |
| 25-29 | 262,044 | 23,171 | .0884 |
| 30-34 | 283,214 | 28,989 | .1024 |
| 35-39 | 268,729 | 15,330 | .0570 |
| 40-44 | 265,424 | 3,420 | .0129 |
| Total | 1,561,222 | 86,702 | .3263 |

Summary Measures

| | 2024 | 2025 |
|-------------------------------|-------|-------|
| Child Dependency Ratio | 35.25 | 35.07 |
| Aged Dependency Ratio | 31.25 | 32.21 |
| Total Dependency Ratio | 66.50 | 67.29 |
| Sex Ratio | 99.57 | 99.59 |
| Male Life Expectancy | 79.45 | 79.62 |
| Female Life Expectancy | 83.27 | 83.38 |
| Total Fertility | 1.63 | 1.63 |
| General Fertility | 55.49 | 55.53 |

**Summary Population Report: 2025-2026
State of Washington**

| |
|----------------|
| Infants |
| Births |
| 87,224 |
| Deaths |
| 449 |

| Age | 2025 Base Population | | | Deaths | | | Net Migration | | | 2026 Estimated Population | | |
|--------------|----------------------|-----------|-----------|--------|--------|--------|---------------|--------|--------|---------------------------|-----------|-----------|
| | Total | Male | Female | Total | Male | Female | Total | Male | Female | Total | Male | Female |
| 0 | 86,251 | 44,143 | 42,108 | 830 | 450 | 380 | 605 | 309 | 296 | 86,775 | 44,412 | 42,363 |
| 1-4 | 342,725 | 175,322 | 167,403 | 126 | 69 | 57 | 3,664 | 1,875 | 1,789 | 346,943 | 177,498 | 169,445 |
| 5-9 | 464,130 | 237,378 | 226,752 | 47 | 26 | 21 | 3,898 | 1,993 | 1,905 | 454,357 | 232,378 | 221,979 |
| 10-14 | 493,740 | 252,597 | 241,143 | 51 | 28 | 23 | 3,023 | 1,570 | 1,453 | 497,518 | 254,533 | 242,985 |
| 15-19 | 496,358 | 254,166 | 242,192 | 185 | 129 | 56 | 4,302 | 2,228 | 2,074 | 500,861 | 256,274 | 244,587 |
| 20-24 | 491,461 | 250,761 | 240,700 | 336 | 245 | 91 | 6,720 | 3,282 | 3,438 | 492,050 | 251,143 | 240,907 |
| 25-29 | 533,656 | 271,855 | 261,801 | 418 | 294 | 124 | 6,681 | 3,354 | 3,327 | 533,825 | 272,097 | 261,728 |
| 30-34 | 577,919 | 294,107 | 283,812 | 517 | 343 | 174 | 5,028 | 2,588 | 2,440 | 575,088 | 292,723 | 282,365 |
| 35-39 | 554,718 | 284,476 | 270,242 | 617 | 387 | 230 | 3,004 | 1,576 | 1,428 | 563,964 | 288,816 | 275,148 |
| 40-44 | 542,692 | 275,956 | 266,736 | 858 | 520 | 338 | 2,094 | 1,083 | 1,011 | 547,883 | 279,081 | 268,802 |
| 45-49 | 488,008 | 246,505 | 241,503 | 1,239 | 745 | 494 | 1,640 | 843 | 797 | 502,849 | 254,040 | 248,809 |
| 50-54 | 467,731 | 235,040 | 232,691 | 1,839 | 1,108 | 731 | 1,444 | 725 | 719 | 458,545 | 230,213 | 228,332 |
| 55-59 | 467,192 | 233,763 | 233,429 | 2,648 | 1,628 | 1,020 | 1,403 | 682 | 721 | 477,380 | 239,199 | 238,181 |
| 60-64 | 486,575 | 238,605 | 247,970 | 3,953 | 2,335 | 1,618 | 1,653 | 742 | 911 | 475,867 | 234,032 | 241,835 |
| 65-69 | 472,659 | 228,123 | 244,536 | 5,746 | 3,265 | 2,481 | 1,570 | 802 | 768 | 476,360 | 230,198 | 246,162 |
| 70-74 | 410,012 | 192,984 | 217,028 | 7,592 | 4,147 | 3,445 | 911 | 451 | 460 | 421,581 | 198,761 | 222,820 |
| 75-79 | 313,742 | 146,110 | 167,632 | 9,245 | 4,927 | 4,318 | 549 | 255 | 294 | 332,375 | 154,494 | 177,881 |
| 80-84 | 188,477 | 85,227 | 103,250 | 9,130 | 4,675 | 4,455 | 274 | 115 | 159 | 197,492 | 89,298 | 108,194 |
| 85+ | 163,697 | 65,415 | 98,282 | 19,021 | 7,956 | 11,065 | 104 | 46 | 58 | 171,423 | 69,243 | 102,180 |
| Total | 8,041,743 | 4,012,533 | 4,029,210 | 64,398 | 33,277 | 31,121 | 48,567 | 24,519 | 24,048 | 8,113,136 | 4,048,433 | 4,064,703 |

Fertility Measures: 2025-2026

| Age | Females | Births | 1yr Rate |
|--------------|-----------|--------|----------|
| 15-19 | 243,450 | 2,792 | .0115 |
| 20-24 | 240,850 | 13,074 | .0543 |
| 25-29 | 261,729 | 23,222 | .0887 |
| 30-34 | 283,033 | 29,069 | .1027 |
| 35-39 | 272,659 | 15,607 | .0572 |
| 40-44 | 267,746 | 3,460 | .0129 |
| Total | 1,569,467 | 87,224 | .3274 |

Summary Measures

| | 2025 | 2026 |
|-------------------------------|-------|-------|
| Child Dependency Ratio | 35.07 | 34.86 |
| Aged Dependency Ratio | 32.21 | 33.11 |
| Total Dependency Ratio | 67.29 | 67.97 |
| Sex Ratio | 99.59 | 99.60 |
| Male Life Expectancy | 79.62 | 79.80 |
| Female Life Expectancy | 83.38 | 83.49 |
| Total Fertility | 1.63 | 1.64 |
| General Fertility | 55.53 | 55.58 |

**Summary Population Report: 2026-2027
State of Washington**

| |
|----------------|
| Infants |
| Births |
| 87,759 |
| Deaths |
| 448 |

| Age | 2026 Base Population | | | Deaths | | | Net Migration | | | 2027 Estimated Population | | |
|--------------|----------------------|-----------|-----------|--------|--------|--------|---------------|--------|--------|---------------------------|-----------|-----------|
| | Total | Male | Female | Total | Male | Female | Total | Male | Female | Total | Male | Female |
| 0 | 86,775 | 44,412 | 42,363 | 828 | 448 | 380 | 623 | 318 | 305 | 87,311 | 44,687 | 42,624 |
| 1-4 | 346,943 | 177,498 | 169,445 | 125 | 68 | 57 | 3,795 | 1,943 | 1,852 | 349,910 | 179,033 | 170,877 |
| 5-9 | 454,357 | 232,378 | 221,979 | 46 | 25 | 21 | 3,905 | 1,997 | 1,908 | 447,716 | 228,984 | 218,732 |
| 10-14 | 497,518 | 254,533 | 242,985 | 51 | 28 | 23 | 3,116 | 1,618 | 1,498 | 498,434 | 255,004 | 243,430 |
| 15-19 | 500,861 | 256,274 | 244,587 | 183 | 127 | 56 | 4,457 | 2,307 | 2,150 | 503,186 | 257,246 | 245,940 |
| 20-24 | 492,050 | 251,143 | 240,907 | 332 | 242 | 90 | 6,881 | 3,361 | 3,520 | 499,430 | 255,173 | 244,257 |
| 25-29 | 533,825 | 272,097 | 261,728 | 412 | 290 | 122 | 6,838 | 3,434 | 3,404 | 531,575 | 270,982 | 260,593 |
| 30-34 | 575,088 | 292,723 | 282,365 | 508 | 337 | 171 | 5,109 | 2,630 | 2,479 | 570,250 | 289,894 | 280,356 |
| 35-39 | 563,964 | 288,816 | 275,148 | 620 | 388 | 232 | 3,129 | 1,639 | 1,490 | 577,393 | 295,361 | 282,032 |
| 40-44 | 547,883 | 279,081 | 268,802 | 858 | 520 | 338 | 2,162 | 1,120 | 1,042 | 549,075 | 280,188 | 268,887 |
| 45-49 | 502,849 | 254,040 | 248,809 | 1,262 | 758 | 504 | 1,730 | 890 | 840 | 517,657 | 261,891 | 255,766 |
| 50-54 | 458,545 | 230,213 | 228,332 | 1,775 | 1,067 | 708 | 1,449 | 726 | 723 | 458,640 | 230,198 | 228,442 |
| 55-59 | 477,380 | 239,199 | 238,181 | 2,676 | 1,644 | 1,032 | 1,468 | 714 | 754 | 481,610 | 241,548 | 240,062 |
| 60-64 | 475,867 | 234,032 | 241,835 | 3,834 | 2,265 | 1,569 | 1,657 | 746 | 911 | 466,176 | 229,528 | 236,648 |
| 65-69 | 476,360 | 230,198 | 246,162 | 5,735 | 3,257 | 2,478 | 1,622 | 830 | 792 | 477,354 | 231,043 | 246,311 |
| 70-74 | 421,581 | 198,761 | 222,820 | 7,743 | 4,226 | 3,517 | 958 | 475 | 483 | 431,270 | 203,793 | 227,477 |
| 75-79 | 332,375 | 154,494 | 177,881 | 9,787 | 5,197 | 4,590 | 593 | 274 | 319 | 338,716 | 157,279 | 181,437 |
| 80-84 | 197,492 | 89,298 | 108,194 | 9,534 | 4,870 | 4,664 | 294 | 123 | 171 | 218,127 | 98,744 | 119,383 |
| 85+ | 171,423 | 69,243 | 102,180 | 19,732 | 8,319 | 11,413 | 112 | 50 | 62 | 180,922 | 73,908 | 107,014 |
| Total | 8,113,136 | 4,048,433 | 4,064,703 | 66,041 | 34,076 | 31,965 | 49,898 | 25,195 | 24,703 | 8,184,752 | 4,084,484 | 4,100,268 |

Fertility Measures: 2026-2027

| Age | Females | Births | 1yr Rate |
|--------------|-----------|--------|----------|
| 15-19 | 245,330 | 2,822 | .0115 |
| 20-24 | 242,620 | 13,213 | .0545 |
| 25-29 | 261,128 | 23,248 | .0890 |
| 30-34 | 281,305 | 28,990 | .1031 |
| 35-39 | 278,552 | 15,998 | .0574 |
| 40-44 | 268,823 | 3,488 | .0130 |
| Total | 1,577,757 | 87,759 | .3285 |

Summary Measures

| | 2026 | 2027 |
|-------------------------------|-------|-------|
| Child Dependency Ratio | 34.86 | 34.66 |
| Aged Dependency Ratio | 33.11 | 33.91 |
| Total Dependency Ratio | 67.97 | 68.57 |
| Sex Ratio | 99.60 | 99.62 |
| Male Life Expectancy | 79.80 | 79.97 |
| Female Life Expectancy | 83.49 | 83.60 |
| Total Fertility | 1.64 | 1.64 |
| General Fertility | 55.58 | 55.62 |

**Summary Population Report: 2027-2028
State of Washington**

| |
|----------------|
| Infants |
| Births |
| 88,338 |
| Deaths |
| 446 |

| Age | 2027 Base Population | | | Deaths | | | Net Migration | | | 2028 Estimated Population | | |
|--------------|----------------------|-----------|-----------|--------|--------|--------|---------------|--------|--------|---------------------------|-----------|-----------|
| | Total | Male | Female | Total | Male | Female | Total | Male | Female | Total | Male | Female |
| 0 | 87,311 | 44,687 | 42,624 | 825 | 446 | 379 | 640 | 327 | 313 | 87,892 | 44,985 | 42,907 |
| 1-4 | 349,910 | 179,033 | 170,877 | 125 | 68 | 57 | 3,902 | 1,997 | 1,905 | 352,585 | 180,408 | 172,177 |
| 5-9 | 447,716 | 228,984 | 218,732 | 44 | 24 | 20 | 3,927 | 2,008 | 1,919 | 445,499 | 227,863 | 217,636 |
| 10-14 | 498,434 | 255,004 | 243,430 | 51 | 28 | 23 | 3,182 | 1,653 | 1,529 | 495,373 | 253,441 | 241,932 |
| 15-19 | 503,186 | 257,246 | 245,940 | 182 | 127 | 55 | 4,565 | 2,359 | 2,206 | 504,615 | 257,814 | 246,801 |
| 20-24 | 499,430 | 255,173 | 244,257 | 332 | 242 | 90 | 7,126 | 3,484 | 3,642 | 510,189 | 261,251 | 248,938 |
| 25-29 | 531,575 | 270,982 | 260,593 | 405 | 284 | 121 | 6,943 | 3,486 | 3,457 | 527,703 | 268,547 | 259,156 |
| 30-34 | 570,250 | 289,894 | 280,356 | 498 | 330 | 168 | 5,169 | 2,656 | 2,513 | 565,145 | 286,783 | 278,362 |
| 35-39 | 577,393 | 295,361 | 282,032 | 628 | 392 | 236 | 3,266 | 1,709 | 1,557 | 589,768 | 301,791 | 287,977 |
| 40-44 | 549,075 | 280,188 | 268,887 | 852 | 516 | 336 | 2,208 | 1,147 | 1,061 | 550,881 | 281,321 | 269,560 |
| 45-49 | 517,657 | 261,891 | 255,766 | 1,288 | 774 | 514 | 1,816 | 935 | 881 | 531,094 | 269,383 | 261,711 |
| 50-54 | 458,640 | 230,198 | 228,442 | 1,755 | 1,052 | 703 | 1,481 | 741 | 740 | 465,695 | 233,804 | 231,891 |
| 55-59 | 481,610 | 241,548 | 240,062 | 2,681 | 1,647 | 1,034 | 1,511 | 735 | 776 | 479,600 | 240,295 | 239,305 |
| 60-64 | 466,176 | 229,528 | 236,648 | 3,723 | 2,198 | 1,525 | 1,658 | 748 | 910 | 457,820 | 225,892 | 231,928 |
| 65-69 | 477,354 | 231,043 | 246,311 | 5,694 | 3,232 | 2,462 | 1,655 | 848 | 807 | 477,592 | 231,404 | 246,188 |
| 70-74 | 431,270 | 203,793 | 227,477 | 7,857 | 4,286 | 3,571 | 999 | 496 | 503 | 437,993 | 207,542 | 230,451 |
| 75-79 | 338,716 | 157,279 | 181,437 | 9,863 | 5,222 | 4,641 | 616 | 285 | 331 | 347,926 | 161,671 | 186,255 |
| 80-84 | 218,127 | 98,744 | 119,383 | 10,366 | 5,287 | 5,079 | 332 | 139 | 193 | 234,938 | 106,306 | 128,632 |
| 85+ | 180,922 | 73,908 | 107,014 | 20,630 | 8,771 | 11,859 | 120 | 54 | 66 | 194,099 | 80,093 | 114,006 |
| Total | 8,184,752 | 4,084,484 | 4,100,268 | 67,799 | 34,926 | 32,873 | 51,116 | 25,807 | 25,309 | 8,256,407 | 4,120,594 | 4,135,813 |

Fertility Measures: 2027-2028

| Age | Females | Births | 1yr Rate |
|--------------|-----------|--------|----------|
| 15-19 | 246,440 | 2,845 | .0115 |
| 20-24 | 246,633 | 13,479 | .0547 |
| 25-29 | 259,843 | 23,210 | .0893 |
| 30-34 | 279,303 | 28,880 | .1034 |
| 35-39 | 284,966 | 16,421 | .0576 |
| 40-44 | 269,201 | 3,503 | .0130 |
| Total | 1,586,385 | 88,338 | .3296 |

Summary Measures

| | 2027 | 2028 |
|-------------------------------|-------|-------|
| Child Dependency Ratio | 34.66 | 34.49 |
| Aged Dependency Ratio | 33.91 | 34.68 |
| Total Dependency Ratio | 68.57 | 69.17 |
| Sex Ratio | 99.62 | 99.63 |
| Male Life Expectancy | 79.97 | 80.15 |
| Female Life Expectancy | 83.60 | 83.71 |
| Total Fertility | 1.64 | 1.65 |
| General Fertility | 55.62 | 55.69 |

**Summary Population Report: 2028-2029
State of Washington**

| |
|----------------|
| Infants |
| Births |
| 88,923 |
| Deaths |
| 444 |

| Age | 2028 Base Population | | | Deaths | | | Net Migration | | | 2029 Estimated Population | | |
|--------------|----------------------|-----------|-----------|--------|--------|--------|---------------|--------|--------|---------------------------|-----------|-----------|
| | Total | Male | Female | Total | Male | Female | Total | Male | Female | Total | Male | Female |
| 0 | 87,892 | 44,985 | 42,907 | 821 | 443 | 378 | 655 | 335 | 320 | 88,479 | 45,286 | 43,193 |
| 1-4 | 352,585 | 180,408 | 172,177 | 125 | 68 | 57 | 4,002 | 2,048 | 1,954 | 355,104 | 181,701 | 173,403 |
| 5-9 | 445,499 | 227,863 | 217,636 | 43 | 24 | 19 | 3,979 | 2,034 | 1,945 | 446,846 | 228,568 | 218,278 |
| 10-14 | 495,373 | 253,441 | 241,932 | 50 | 28 | 22 | 3,218 | 1,671 | 1,547 | 489,887 | 250,636 | 239,251 |
| 15-19 | 504,615 | 257,814 | 246,801 | 179 | 125 | 54 | 4,655 | 2,403 | 2,252 | 506,759 | 259,155 | 247,604 |
| 20-24 | 510,189 | 261,251 | 248,938 | 335 | 245 | 90 | 7,407 | 3,630 | 3,777 | 518,297 | 265,180 | 253,117 |
| 25-29 | 527,703 | 268,547 | 259,156 | 399 | 279 | 120 | 7,009 | 3,514 | 3,495 | 525,869 | 267,273 | 258,596 |
| 30-34 | 565,145 | 286,783 | 278,362 | 490 | 322 | 168 | 5,220 | 2,680 | 2,540 | 562,838 | 286,040 | 276,798 |
| 35-39 | 589,768 | 301,791 | 287,977 | 637 | 396 | 241 | 3,393 | 1,777 | 1,616 | 596,387 | 304,323 | 292,064 |
| 40-44 | 550,881 | 281,321 | 269,560 | 847 | 512 | 335 | 2,257 | 1,173 | 1,084 | 557,014 | 284,769 | 272,245 |
| 45-49 | 531,094 | 269,383 | 261,711 | 1,309 | 786 | 523 | 1,894 | 978 | 916 | 542,422 | 275,508 | 266,914 |
| 50-54 | 465,695 | 233,804 | 231,891 | 1,760 | 1,054 | 706 | 1,529 | 767 | 762 | 475,482 | 239,082 | 236,400 |
| 55-59 | 479,600 | 240,295 | 239,305 | 2,654 | 1,627 | 1,027 | 1,531 | 744 | 787 | 472,809 | 236,596 | 236,213 |
| 60-64 | 457,820 | 225,892 | 231,928 | 3,616 | 2,135 | 1,481 | 1,656 | 749 | 907 | 454,756 | 225,136 | 229,620 |
| 65-69 | 477,592 | 231,404 | 246,188 | 5,641 | 3,198 | 2,443 | 1,687 | 865 | 822 | 477,368 | 231,554 | 245,814 |
| 70-74 | 437,993 | 207,542 | 230,451 | 7,903 | 4,311 | 3,592 | 1,033 | 515 | 518 | 442,342 | 210,451 | 231,891 |
| 75-79 | 347,926 | 161,671 | 186,255 | 10,000 | 5,288 | 4,712 | 645 | 298 | 347 | 359,092 | 166,297 | 192,795 |
| 80-84 | 234,938 | 106,306 | 128,632 | 10,999 | 5,597 | 5,402 | 364 | 153 | 211 | 249,021 | 113,032 | 135,989 |
| 85+ | 194,099 | 80,093 | 114,006 | 21,924 | 9,390 | 12,534 | 132 | 60 | 72 | 207,092 | 86,101 | 120,991 |
| Total | 8,256,407 | 4,120,594 | 4,135,813 | 69,732 | 35,828 | 33,904 | 52,266 | 26,394 | 25,872 | 8,327,864 | 4,156,688 | 4,171,176 |

Fertility Measures: 2028-2029

| Age | Females | Births | 1yr Rate |
|--------------|-----------|--------|----------|
| 15-19 | 247,274 | 2,865 | .0116 |
| 20-24 | 251,065 | 13,763 | .0549 |
| 25-29 | 258,841 | 23,200 | .0896 |
| 30-34 | 277,522 | 28,792 | .1037 |
| 35-39 | 289,984 | 16,766 | .0578 |
| 40-44 | 270,878 | 3,537 | .0131 |
| Total | 1,595,564 | 88,923 | .3307 |

Summary Measures

| | 2028 | 2029 |
|-------------------------------|-------|-------|
| Child Dependency Ratio | 34.49 | 34.32 |
| Aged Dependency Ratio | 34.68 | 35.34 |
| Total Dependency Ratio | 69.17 | 69.66 |
| Sex Ratio | 99.63 | 99.65 |
| Male Life Expectancy | 80.15 | 80.32 |
| Female Life Expectancy | 83.71 | 83.81 |
| Total Fertility | 1.65 | 1.65 |
| General Fertility | 55.69 | 55.73 |

**Summary Population Report: 2029-2030
State of Washington**

| |
|----------------|
| Infants |
| Births |
| 89,507 |
| Deaths |
| 443 |

| Age | 2029 Base Population | | | Deaths | | | Net Migration | | | 2030 Estimated Population | | |
|--------------|----------------------|-----------|-----------|--------|--------|--------|---------------|--------|--------|---------------------------|-----------|-----------|
| | Total | Male | Female | Total | Male | Female | Total | Male | Female | Total | Male | Female |
| 0 | 88,479 | 45,286 | 43,193 | 819 | 441 | 378 | 670 | 342 | 328 | 89,064 | 45,586 | 43,478 |
| 1-4 | 355,104 | 181,701 | 173,403 | 123 | 67 | 56 | 4,094 | 2,095 | 1,999 | 357,549 | 182,956 | 174,593 |
| 5-9 | 446,846 | 228,568 | 218,278 | 42 | 23 | 19 | 4,055 | 2,074 | 1,981 | 449,978 | 230,187 | 219,791 |
| 10-14 | 489,887 | 250,636 | 239,251 | 50 | 28 | 22 | 3,231 | 1,677 | 1,554 | 482,196 | 246,706 | 235,490 |
| 15-19 | 506,759 | 259,155 | 247,604 | 178 | 124 | 54 | 4,743 | 2,452 | 2,291 | 510,125 | 260,920 | 249,205 |
| 20-24 | 518,297 | 265,180 | 253,117 | 338 | 246 | 92 | 7,642 | 3,742 | 3,900 | 524,906 | 268,358 | 256,548 |
| 25-29 | 525,869 | 267,273 | 258,596 | 392 | 274 | 118 | 7,096 | 3,554 | 3,542 | 525,279 | 266,961 | 258,318 |
| 30-34 | 562,838 | 286,040 | 276,798 | 481 | 317 | 164 | 5,285 | 2,717 | 2,568 | 562,780 | 286,260 | 276,520 |
| 35-39 | 596,387 | 304,323 | 292,064 | 637 | 396 | 241 | 3,477 | 1,814 | 1,663 | 596,994 | 303,635 | 293,359 |
| 40-44 | 557,014 | 284,769 | 272,245 | 847 | 512 | 335 | 2,318 | 1,206 | 1,112 | 564,839 | 289,433 | 275,406 |
| 45-49 | 542,422 | 275,508 | 266,914 | 1,328 | 797 | 531 | 1,965 | 1,015 | 950 | 547,831 | 278,202 | 269,629 |
| 50-54 | 475,482 | 239,082 | 236,400 | 1,780 | 1,066 | 714 | 1,585 | 796 | 789 | 488,983 | 246,347 | 242,636 |
| 55-59 | 472,809 | 236,596 | 236,213 | 2,598 | 1,588 | 1,010 | 1,537 | 746 | 791 | 464,608 | 232,336 | 232,272 |
| 60-64 | 454,756 | 225,136 | 229,620 | 3,550 | 2,098 | 1,452 | 1,668 | 758 | 910 | 459,782 | 228,246 | 231,536 |
| 65-69 | 477,368 | 231,554 | 245,814 | 5,589 | 3,166 | 2,423 | 1,710 | 878 | 832 | 472,887 | 229,719 | 243,168 |
| 70-74 | 442,342 | 210,451 | 231,891 | 7,919 | 4,327 | 3,592 | 1,060 | 529 | 531 | 446,654 | 213,282 | 233,372 |
| 75-79 | 359,092 | 166,297 | 192,795 | 10,212 | 5,373 | 4,839 | 678 | 313 | 365 | 370,856 | 171,721 | 199,135 |
| 80-84 | 249,021 | 113,032 | 135,989 | 11,564 | 5,889 | 5,675 | 392 | 165 | 227 | 264,196 | 120,009 | 144,187 |
| 85+ | 207,092 | 86,101 | 120,991 | 23,171 | 9,973 | 13,198 | 143 | 66 | 77 | 219,595 | 91,885 | 127,710 |
| Total | 8,327,864 | 4,156,688 | 4,171,176 | 71,618 | 36,705 | 34,913 | 53,349 | 26,939 | 26,410 | 8,399,102 | 4,192,749 | 4,206,353 |

Fertility Measures: 2029-2030

| Age | Females | Births | 1yr Rate |
|--------------|-----------|--------|----------|
| 15-19 | 248,476 | 2,888 | .0116 |
| 20-24 | 254,874 | 14,022 | .0551 |
| 25-29 | 258,420 | 23,239 | .0899 |
| 30-34 | 276,598 | 28,793 | .1041 |
| 35-39 | 292,677 | 16,978 | .0580 |
| 40-44 | 273,800 | 3,587 | .0131 |
| Total | 1,604,845 | 89,507 | .3318 |

Summary Measures

| | 2029 | 2030 |
|-------------------------------|-------|-------|
| Child Dependency Ratio | 34.32 | 34.10 |
| Aged Dependency Ratio | 35.34 | 35.91 |
| Total Dependency Ratio | 69.66 | 70.01 |
| Sex Ratio | 99.65 | 99.68 |
| Male Life Expectancy | 80.32 | 80.50 |
| Female Life Expectancy | 83.81 | 83.92 |
| Total Fertility | 1.65 | 1.66 |
| General Fertility | 55.73 | 55.77 |

**Summary Population Report: 2030-2031
State of Washington**

| |
|----------------|
| Infants |
| Births |
| 90,067 |
| Deaths |
| 441 |

| Age | 2030 Base Population | | | Deaths | | | Net Migration | | | 2031 Estimated Population | | |
|--------------|----------------------|-----------|-----------|--------|--------|--------|---------------|--------|--------|---------------------------|-----------|-----------|
| | Total | Male | Female | Total | Male | Female | Total | Male | Female | Total | Male | Female |
| 0 | 89,064 | 45,586 | 43,478 | 815 | 437 | 378 | 683 | 349 | 334 | 89,626 | 45,875 | 43,751 |
| 1-4 | 357,549 | 182,956 | 174,593 | 123 | 67 | 56 | 4,178 | 2,138 | 2,040 | 360,044 | 184,238 | 175,806 |
| 5-9 | 449,978 | 230,187 | 219,791 | 42 | 23 | 19 | 4,140 | 2,117 | 2,023 | 455,364 | 232,962 | 222,402 |
| 10-14 | 482,196 | 246,706 | 235,490 | 48 | 27 | 21 | 3,224 | 1,674 | 1,550 | 472,382 | 241,685 | 230,697 |
| 15-19 | 510,125 | 260,920 | 249,205 | 178 | 124 | 54 | 4,841 | 2,503 | 2,338 | 514,346 | 263,083 | 251,263 |
| 20-24 | 524,906 | 268,358 | 256,548 | 339 | 247 | 92 | 7,849 | 3,840 | 4,009 | 530,277 | 270,888 | 259,389 |
| 25-29 | 525,279 | 266,961 | 258,318 | 388 | 270 | 118 | 7,193 | 3,602 | 3,591 | 526,606 | 267,716 | 258,890 |
| 30-34 | 562,780 | 286,260 | 276,520 | 475 | 313 | 162 | 5,360 | 2,758 | 2,602 | 563,570 | 286,830 | 276,740 |
| 35-39 | 596,994 | 303,635 | 293,359 | 631 | 390 | 241 | 3,522 | 1,834 | 1,688 | 594,468 | 302,418 | 292,050 |
| 40-44 | 564,839 | 289,433 | 275,406 | 850 | 514 | 336 | 2,385 | 1,244 | 1,141 | 574,563 | 294,012 | 280,551 |
| 45-49 | 547,831 | 278,202 | 269,629 | 1,328 | 796 | 532 | 2,013 | 1,041 | 972 | 553,309 | 281,485 | 271,824 |
| 50-54 | 488,983 | 246,347 | 242,636 | 1,808 | 1,082 | 726 | 1,656 | 833 | 823 | 504,087 | 254,011 | 250,076 |
| 55-59 | 464,608 | 232,336 | 232,272 | 2,517 | 1,535 | 982 | 1,529 | 741 | 788 | 455,759 | 227,727 | 228,032 |
| 60-64 | 459,782 | 228,246 | 231,536 | 3,536 | 2,091 | 1,445 | 1,705 | 776 | 929 | 470,110 | 233,737 | 236,373 |
| 65-69 | 472,887 | 229,719 | 243,168 | 5,483 | 3,103 | 2,380 | 1,716 | 883 | 833 | 462,815 | 225,525 | 237,290 |
| 70-74 | 446,654 | 213,282 | 233,372 | 7,913 | 4,330 | 3,583 | 1,086 | 545 | 541 | 450,592 | 215,493 | 235,099 |
| 75-79 | 370,856 | 171,721 | 199,135 | 10,436 | 5,478 | 4,958 | 711 | 328 | 383 | 381,743 | 177,138 | 204,605 |
| 80-84 | 264,196 | 120,009 | 144,187 | 12,201 | 6,205 | 5,996 | 420 | 176 | 244 | 279,940 | 126,965 | 152,975 |
| 85+ | 219,595 | 91,885 | 127,710 | 24,335 | 10,513 | 13,822 | 154 | 71 | 83 | 230,487 | 96,983 | 133,504 |
| Total | 8,399,102 | 4,192,749 | 4,206,353 | 73,446 | 37,545 | 35,901 | 54,365 | 27,453 | 26,912 | 8,470,088 | 4,228,771 | 4,241,317 |

Fertility Measures: 2030-2031

| Age | Females | Births | 1yr Rate |
|--------------|-----------|--------|----------|
| 15-19 | 250,305 | 2,919 | .0117 |
| 20-24 | 258,013 | 14,242 | .0553 |
| 25-29 | 258,564 | 23,330 | .0902 |
| 30-34 | 276,567 | 28,885 | .1044 |
| 35-39 | 292,673 | 17,036 | .0582 |
| 40-44 | 277,951 | 3,655 | .0131 |
| Total | 1,614,073 | 90,067 | .3330 |

Summary Measures

| | 2030 | 2031 |
|-------------------------------|-------|-------|
| Child Dependency Ratio | 34.10 | 33.84 |
| Aged Dependency Ratio | 35.91 | 36.26 |
| Total Dependency Ratio | 70.01 | 70.10 |
| Sex Ratio | 99.68 | 99.70 |
| Male Life Expectancy | 80.50 | 80.67 |
| Female Life Expectancy | 83.92 | 84.03 |
| Total Fertility | 1.66 | 1.66 |
| General Fertility | 55.77 | 55.80 |

**Summary Population Report: 2031-2032
State of Washington**

| |
|----------------|
| Infants |
| Births |
| 90,655 |
| Deaths |
| 439 |

| Age | 2031 Base Population | | | Deaths | | | Net Migration | | | 2032 Estimated Population | | |
|--------------|----------------------|-----------|-----------|--------|--------|--------|---------------|--------|--------|---------------------------|-----------|-----------|
| | Total | Male | Female | Total | Male | Female | Total | Male | Female | Total | Male | Female |
| 0 | 89,626 | 45,875 | 43,751 | 812 | 435 | 377 | 696 | 356 | 340 | 90,216 | 46,177 | 44,039 |
| 1-4 | 360,044 | 184,238 | 175,806 | 123 | 67 | 56 | 4,258 | 2,179 | 2,079 | 362,553 | 185,528 | 177,025 |
| 5-9 | 455,364 | 232,962 | 222,402 | 42 | 23 | 19 | 4,238 | 2,168 | 2,070 | 459,414 | 235,052 | 224,362 |
| 10-14 | 472,382 | 241,685 | 230,697 | 47 | 26 | 21 | 3,195 | 1,658 | 1,537 | 465,800 | 238,318 | 227,482 |
| 15-19 | 514,346 | 263,083 | 251,263 | 177 | 123 | 54 | 4,942 | 2,555 | 2,387 | 515,576 | 263,719 | 251,857 |
| 20-24 | 530,277 | 270,888 | 259,389 | 339 | 247 | 92 | 8,027 | 3,924 | 4,103 | 533,228 | 272,159 | 261,069 |
| 25-29 | 526,606 | 267,716 | 258,890 | 385 | 269 | 116 | 7,305 | 3,659 | 3,646 | 535,131 | 272,324 | 262,807 |
| 30-34 | 563,570 | 286,830 | 276,740 | 471 | 310 | 161 | 5,432 | 2,796 | 2,636 | 561,718 | 285,924 | 275,794 |
| 35-39 | 594,468 | 302,418 | 292,050 | 624 | 385 | 239 | 3,544 | 1,845 | 1,699 | 589,857 | 299,705 | 290,152 |
| 40-44 | 574,563 | 294,012 | 280,551 | 853 | 514 | 339 | 2,457 | 1,279 | 1,178 | 588,511 | 300,822 | 287,689 |
| 45-49 | 553,309 | 281,485 | 271,824 | 1,328 | 796 | 532 | 2,056 | 1,064 | 992 | 554,724 | 282,722 | 272,002 |
| 50-54 | 504,087 | 254,011 | 250,076 | 1,844 | 1,101 | 743 | 1,726 | 868 | 858 | 519,144 | 261,984 | 257,160 |
| 55-59 | 455,759 | 227,727 | 228,032 | 2,436 | 1,482 | 954 | 1,516 | 735 | 781 | 456,098 | 227,860 | 228,238 |
| 60-64 | 470,110 | 233,737 | 236,373 | 3,575 | 2,114 | 1,461 | 1,762 | 803 | 959 | 474,512 | 236,171 | 238,341 |
| 65-69 | 462,815 | 225,525 | 237,290 | 5,326 | 3,016 | 2,310 | 1,698 | 876 | 822 | 453,700 | 221,380 | 232,320 |
| 70-74 | 450,592 | 215,493 | 235,099 | 7,904 | 4,324 | 3,580 | 1,108 | 558 | 550 | 451,927 | 216,539 | 235,388 |
| 75-79 | 381,743 | 177,138 | 204,605 | 10,656 | 5,592 | 5,064 | 738 | 341 | 397 | 390,920 | 181,899 | 209,021 |
| 80-84 | 279,940 | 126,965 | 152,975 | 12,929 | 6,552 | 6,377 | 452 | 189 | 263 | 285,909 | 129,629 | 156,280 |
| 85+ | 230,487 | 96,983 | 133,504 | 25,301 | 10,964 | 14,337 | 164 | 76 | 88 | 251,947 | 106,863 | 145,084 |
| Total | 8,470,088 | 4,228,771 | 4,241,317 | 75,172 | 38,340 | 36,832 | 55,314 | 27,929 | 27,385 | 8,540,885 | 4,264,775 | 4,276,110 |

Fertility Measures: 2031-2032

| Age | Females | Births | 1yr Rate |
|--------------|-----------|--------|----------|
| 15-19 | 251,636 | 2,944 | .0117 |
| 20-24 | 260,280 | 14,413 | .0555 |
| 25-29 | 260,796 | 23,610 | .0905 |
| 30-34 | 276,207 | 28,943 | .1048 |
| 35-39 | 291,070 | 16,998 | .0584 |
| 40-44 | 284,091 | 3,747 | .0132 |
| Total | 1,624,079 | 90,655 | .3341 |

Summary Measures

| | 2031 | 2032 |
|-------------------------------|-------|-------|
| Child Dependency Ratio | 33.84 | 33.59 |
| Aged Dependency Ratio | 36.26 | 36.54 |
| Total Dependency Ratio | 70.10 | 70.13 |
| Sex Ratio | 99.70 | 99.73 |
| Male Life Expectancy | 80.67 | 80.85 |
| Female Life Expectancy | 84.03 | 84.13 |
| Total Fertility | 1.66 | 1.67 |
| General Fertility | 55.80 | 55.82 |

**Summary Population Report: 2032-2033
State of Washington**

| |
|----------------|
| Infants |
| Births |
| 91,310 |
| Deaths |
| 438 |

| Age | 2032 Base Population | | | Deaths | | | Net Migration | | | 2033 Estimated Population | | |
|--------------|----------------------|-----------|-----------|--------|--------|--------|---------------|--------|--------|---------------------------|-----------|-----------|
| | Total | Male | Female | Total | Male | Female | Total | Male | Female | Total | Male | Female |
| 0 | 90,216 | 46,177 | 44,039 | 809 | 433 | 376 | 708 | 362 | 346 | 90,872 | 46,513 | 44,359 |
| 1-4 | 362,553 | 185,528 | 177,025 | 123 | 67 | 56 | 4,331 | 2,217 | 2,114 | 365,056 | 186,814 | 178,242 |
| 5-9 | 459,414 | 235,052 | 224,362 | 42 | 23 | 19 | 4,320 | 2,210 | 2,110 | 463,174 | 236,984 | 226,190 |
| 10-14 | 465,800 | 238,318 | 227,482 | 46 | 25 | 21 | 3,186 | 1,654 | 1,532 | 463,782 | 237,298 | 226,484 |
| 15-19 | 515,576 | 263,719 | 251,857 | 176 | 122 | 54 | 5,009 | 2,590 | 2,419 | 512,664 | 262,232 | 250,432 |
| 20-24 | 533,228 | 272,159 | 261,069 | 336 | 244 | 92 | 8,153 | 3,983 | 4,170 | 535,167 | 272,980 | 262,187 |
| 25-29 | 535,131 | 272,324 | 262,807 | 386 | 270 | 116 | 7,506 | 3,763 | 3,743 | 547,218 | 279,090 | 268,128 |
| 30-34 | 561,718 | 285,924 | 275,794 | 466 | 306 | 160 | 5,462 | 2,812 | 2,650 | 558,080 | 283,588 | 274,492 |
| 35-39 | 589,857 | 299,705 | 290,152 | 613 | 377 | 236 | 3,553 | 1,847 | 1,706 | 584,952 | 296,694 | 288,258 |
| 40-44 | 588,511 | 300,822 | 287,689 | 864 | 520 | 344 | 2,541 | 1,321 | 1,220 | 601,353 | 307,498 | 293,855 |
| 45-49 | 554,724 | 282,722 | 272,002 | 1,319 | 791 | 528 | 2,083 | 1,080 | 1,003 | 556,755 | 283,981 | 272,774 |
| 50-54 | 519,144 | 261,984 | 257,160 | 1,880 | 1,122 | 758 | 1,797 | 905 | 892 | 532,813 | 269,592 | 263,221 |
| 55-59 | 456,098 | 227,860 | 228,238 | 2,407 | 1,461 | 946 | 1,533 | 744 | 789 | 463,333 | 231,563 | 231,770 |
| 60-64 | 474,512 | 236,171 | 238,341 | 3,585 | 2,119 | 1,466 | 1,801 | 821 | 980 | 472,743 | 235,066 | 237,677 |
| 65-69 | 453,700 | 221,380 | 232,320 | 5,177 | 2,930 | 2,247 | 1,680 | 869 | 811 | 445,909 | 218,082 | 227,827 |
| 70-74 | 451,927 | 216,539 | 235,388 | 7,859 | 4,298 | 3,561 | 1,122 | 565 | 557 | 452,564 | 217,140 | 235,424 |
| 75-79 | 390,920 | 181,899 | 209,021 | 10,828 | 5,682 | 5,146 | 764 | 354 | 410 | 397,492 | 185,562 | 211,930 |
| 80-84 | 285,909 | 129,629 | 156,280 | 13,061 | 6,603 | 6,458 | 466 | 196 | 270 | 294,412 | 133,670 | 160,742 |
| 85+ | 251,947 | 106,863 | 145,084 | 27,394 | 11,936 | 15,458 | 182 | 85 | 97 | 272,682 | 116,227 | 156,455 |
| Total | 8,540,885 | 4,264,775 | 4,276,110 | 77,371 | 39,329 | 38,042 | 56,197 | 28,378 | 27,819 | 8,611,021 | 4,300,574 | 4,310,447 |

Fertility Measures: 2032-2033

| Age | Females | Births | 1yr Rate |
|--------------|-----------|--------|----------|
| 15-19 | 251,225 | 2,949 | .0117 |
| 20-24 | 261,682 | 14,541 | .0556 |
| 25-29 | 265,410 | 24,107 | .0908 |
| 30-34 | 275,084 | 28,921 | .1051 |
| 35-39 | 289,173 | 16,945 | .0586 |
| 40-44 | 290,743 | 3,847 | .0132 |
| Total | 1,633,317 | 91,310 | .3352 |

Summary Measures

| | 2032 | 2033 |
|-------------------------------|-------|-------|
| Child Dependency Ratio | 33.59 | 33.33 |
| Aged Dependency Ratio | 36.54 | 36.81 |
| Total Dependency Ratio | 70.13 | 70.15 |
| Sex Ratio | 99.73 | 99.77 |
| Male Life Expectancy | 80.85 | 81.02 |
| Female Life Expectancy | 84.13 | 84.24 |
| Total Fertility | 1.67 | 1.68 |
| General Fertility | 55.82 | 55.90 |

**Summary Population Report: 2033-2034
State of Washington**

| |
|----------------|
| Infants |
| Births |
| 91,985 |
| Deaths |
| 437 |

| Age | 2033 Base Population | | | Deaths | | | Net Migration | | | 2034 Estimated Population | | |
|--------------|----------------------|-----------|-----------|--------|--------|--------|---------------|--------|--------|---------------------------|-----------|-----------|
| | Total | Male | Female | Total | Male | Female | Total | Male | Female | Total | Male | Female |
| 0 | 90,872 | 46,513 | 44,359 | 807 | 431 | 376 | 720 | 368 | 352 | 91,548 | 46,860 | 44,688 |
| 1-4 | 365,056 | 186,814 | 178,242 | 123 | 67 | 56 | 4,398 | 2,251 | 2,147 | 367,613 | 188,127 | 179,486 |
| 5-9 | 463,174 | 236,984 | 226,190 | 42 | 23 | 19 | 4,392 | 2,247 | 2,145 | 466,742 | 238,815 | 227,927 |
| 10-14 | 463,782 | 237,298 | 226,484 | 45 | 24 | 21 | 3,201 | 1,663 | 1,538 | 465,433 | 238,163 | 227,270 |
| 15-19 | 512,664 | 262,232 | 250,432 | 173 | 120 | 53 | 5,037 | 2,604 | 2,433 | 507,224 | 259,450 | 247,774 |
| 20-24 | 535,167 | 272,980 | 262,187 | 333 | 241 | 92 | 8,254 | 4,029 | 4,225 | 537,832 | 274,605 | 263,227 |
| 25-29 | 547,218 | 279,090 | 268,128 | 391 | 273 | 118 | 7,746 | 3,891 | 3,855 | 556,425 | 283,544 | 272,881 |
| 30-34 | 558,080 | 283,588 | 274,492 | 458 | 300 | 158 | 5,470 | 2,810 | 2,660 | 556,578 | 282,471 | 274,107 |
| 35-39 | 584,952 | 296,694 | 288,258 | 599 | 367 | 232 | 3,558 | 1,847 | 1,711 | 582,895 | 296,103 | 286,792 |
| 40-44 | 601,353 | 307,498 | 293,855 | 877 | 526 | 351 | 2,618 | 1,362 | 1,256 | 608,292 | 310,179 | 298,113 |
| 45-49 | 556,755 | 283,981 | 272,774 | 1,311 | 785 | 526 | 2,108 | 1,094 | 1,014 | 563,144 | 287,573 | 275,571 |
| 50-54 | 532,813 | 269,592 | 263,221 | 1,914 | 1,144 | 770 | 1,861 | 940 | 921 | 544,343 | 275,819 | 268,524 |
| 55-59 | 463,333 | 231,563 | 231,770 | 2,418 | 1,466 | 952 | 1,568 | 760 | 808 | 473,259 | 236,905 | 236,354 |
| 60-64 | 472,743 | 235,066 | 237,677 | 3,548 | 2,091 | 1,457 | 1,813 | 827 | 986 | 466,264 | 231,576 | 234,688 |
| 65-69 | 445,909 | 218,082 | 227,827 | 5,031 | 2,848 | 2,183 | 1,668 | 864 | 804 | 443,279 | 217,568 | 225,711 |
| 70-74 | 452,564 | 217,140 | 235,424 | 7,794 | 4,259 | 3,535 | 1,133 | 571 | 562 | 452,691 | 217,503 | 235,188 |
| 75-79 | 397,492 | 185,562 | 211,930 | 10,911 | 5,729 | 5,182 | 784 | 365 | 419 | 401,833 | 188,422 | 213,411 |
| 80-84 | 294,412 | 133,670 | 160,742 | 13,277 | 6,708 | 6,569 | 485 | 204 | 281 | 304,454 | 137,847 | 166,607 |
| 85+ | 272,682 | 116,227 | 156,455 | 29,368 | 12,828 | 16,540 | 198 | 93 | 105 | 290,749 | 124,700 | 166,049 |
| Total | 8,611,021 | 4,300,574 | 4,310,447 | 79,420 | 40,230 | 39,190 | 57,012 | 28,790 | 28,222 | 8,680,598 | 4,336,230 | 4,344,368 |

Fertility Measures: 2033-2034

| Age | Females | Births | 1yr Rate |
|--------------|-----------|--------|----------|
| 15-19 | 249,186 | 2,934 | .0118 |
| 20-24 | 262,762 | 14,648 | .0558 |
| 25-29 | 270,449 | 24,646 | .0911 |
| 30-34 | 274,237 | 28,928 | .1055 |
| 35-39 | 287,493 | 16,900 | .0588 |
| 40-44 | 295,956 | 3,929 | .0133 |
| Total | 1,640,083 | 91,985 | .3363 |

Summary Measures

| | 2033 | 2034 |
|-------------------------------|-------|-------|
| Child Dependency Ratio | 33.33 | 33.10 |
| Aged Dependency Ratio | 36.81 | 37.12 |
| Total Dependency Ratio | 70.15 | 70.22 |
| Sex Ratio | 99.77 | 99.81 |
| Male Life Expectancy | 81.02 | 81.19 |
| Female Life Expectancy | 84.24 | 84.35 |
| Total Fertility | 1.68 | 1.68 |
| General Fertility | 55.90 | 56.09 |

**Summary Population Report: 2034-2035
State of Washington**

| |
|----------------|
| Infants |
| Births |
| 92,695 |
| Deaths |
| 436 |

| Age | 2034 Base Population | | | Deaths | | | Net Migration | | | 2035 Estimated Population | | |
|--------------|----------------------|-----------|-----------|--------|--------|--------|---------------|--------|--------|---------------------------|-----------|-----------|
| | Total | Male | Female | Total | Male | Female | Total | Male | Female | Total | Male | Female |
| 0 | 91,548 | 46,860 | 44,688 | 805 | 429 | 376 | 730 | 373 | 357 | 92,259 | 47,224 | 45,035 |
| 1-4 | 367,613 | 188,127 | 179,486 | 122 | 66 | 56 | 4,460 | 2,283 | 2,177 | 370,251 | 189,482 | 180,769 |
| 5-9 | 466,742 | 238,815 | 227,927 | 42 | 23 | 19 | 4,459 | 2,281 | 2,178 | 470,195 | 240,588 | 229,607 |
| 10-14 | 465,433 | 238,163 | 227,270 | 44 | 24 | 20 | 3,238 | 1,683 | 1,555 | 468,909 | 239,961 | 228,948 |
| 15-19 | 507,224 | 259,450 | 247,774 | 172 | 119 | 53 | 5,046 | 2,611 | 2,435 | 499,463 | 255,487 | 243,976 |
| 20-24 | 537,832 | 274,605 | 263,227 | 332 | 240 | 92 | 8,352 | 4,081 | 4,271 | 541,745 | 276,653 | 265,092 |
| 25-29 | 556,425 | 283,544 | 272,881 | 394 | 274 | 120 | 7,929 | 3,978 | 3,951 | 563,972 | 287,170 | 276,802 |
| 30-34 | 556,578 | 282,471 | 274,107 | 450 | 294 | 156 | 5,494 | 2,820 | 2,674 | 556,370 | 282,359 | 274,011 |
| 35-39 | 582,895 | 296,103 | 286,792 | 592 | 362 | 230 | 3,572 | 1,858 | 1,714 | 583,121 | 296,484 | 286,637 |
| 40-44 | 608,292 | 310,179 | 298,113 | 878 | 525 | 353 | 2,665 | 1,383 | 1,282 | 609,089 | 309,581 | 299,508 |
| 45-49 | 563,144 | 287,573 | 275,571 | 1,313 | 785 | 528 | 2,149 | 1,117 | 1,032 | 571,244 | 292,393 | 278,851 |
| 50-54 | 544,343 | 275,819 | 268,524 | 1,941 | 1,160 | 781 | 1,912 | 967 | 945 | 549,961 | 278,629 | 271,332 |
| 55-59 | 473,259 | 236,905 | 236,354 | 2,447 | 1,483 | 964 | 1,617 | 785 | 832 | 486,920 | 244,246 | 242,674 |
| 60-64 | 466,264 | 231,576 | 234,688 | 3,476 | 2,042 | 1,434 | 1,806 | 823 | 983 | 458,439 | 227,571 | 230,868 |
| 65-69 | 443,279 | 217,568 | 225,711 | 4,937 | 2,798 | 2,139 | 1,673 | 869 | 804 | 448,569 | 220,804 | 227,765 |
| 70-74 | 452,691 | 217,503 | 235,188 | 7,733 | 4,223 | 3,510 | 1,141 | 577 | 564 | 448,812 | 216,024 | 232,788 |
| 75-79 | 401,833 | 188,422 | 213,411 | 10,944 | 5,758 | 5,186 | 799 | 374 | 425 | 406,258 | 191,281 | 214,977 |
| 80-84 | 304,454 | 137,847 | 166,607 | 13,593 | 6,836 | 6,757 | 504 | 210 | 294 | 315,045 | 142,722 | 172,323 |
| 85+ | 290,749 | 124,700 | 166,049 | 31,019 | 13,600 | 17,419 | 214 | 101 | 113 | 309,197 | 133,163 | 176,034 |
| Total | 8,680,598 | 4,336,230 | 4,344,368 | 81,234 | 41,041 | 40,193 | 57,760 | 29,174 | 28,586 | 8,749,819 | 4,371,822 | 4,377,997 |

Fertility Measures: 2034-2035

| Age | Females | Births | 1yr Rate |
|--------------|-----------|--------|----------|
| 15-19 | 245,962 | 2,906 | .0118 |
| 20-24 | 264,213 | 14,781 | .0560 |
| 25-29 | 274,788 | 25,123 | .0914 |
| 30-34 | 273,995 | 28,997 | .1058 |
| 35-39 | 286,681 | 16,909 | .0590 |
| 40-44 | 298,785 | 3,979 | .0133 |
| Total | 1,644,422 | 92,695 | .3374 |

Summary Measures

| | 2034 | 2035 |
|-------------------------------|-------|-------|
| Child Dependency Ratio | 33.10 | 32.96 |
| Aged Dependency Ratio | 37.12 | 37.57 |
| Total Dependency Ratio | 70.22 | 70.53 |
| Sex Ratio | 99.81 | 99.86 |
| Male Life Expectancy | 81.19 | 81.37 |
| Female Life Expectancy | 84.35 | 84.46 |
| Total Fertility | 1.68 | 1.69 |
| General Fertility | 56.09 | 56.37 |

**Summary Population Report: 2035-2036
State of Washington**

| |
|----------------|
| Infants |
| Births |
| 93,435 |
| Deaths |
| 435 |

| Age | 2035 Base Population | | | Deaths | | | Net Migration | | | 2036 Estimated Population | | |
|--------------|----------------------|-----------|-----------|--------|--------|--------|---------------|--------|--------|---------------------------|-----------|-----------|
| | Total | Male | Female | Total | Male | Female | Total | Male | Female | Total | Male | Female |
| 0 | 92,259 | 47,224 | 45,035 | 804 | 428 | 376 | 740 | 378 | 362 | 93,000 | 47,604 | 45,396 |
| 1-4 | 370,251 | 189,482 | 180,769 | 122 | 66 | 56 | 4,520 | 2,314 | 2,206 | 373,031 | 190,907 | 182,124 |
| 5-9 | 470,195 | 240,588 | 229,607 | 42 | 23 | 19 | 4,520 | 2,312 | 2,208 | 473,644 | 242,361 | 231,283 |
| 10-14 | 468,909 | 239,961 | 228,948 | 45 | 24 | 21 | 3,281 | 1,705 | 1,576 | 474,689 | 242,942 | 231,747 |
| 15-19 | 499,463 | 255,487 | 243,976 | 168 | 116 | 52 | 5,008 | 2,592 | 2,416 | 489,455 | 250,370 | 239,085 |
| 20-24 | 541,745 | 276,653 | 265,092 | 331 | 239 | 92 | 8,465 | 4,137 | 4,328 | 546,539 | 279,107 | 267,432 |
| 25-29 | 563,972 | 287,170 | 276,802 | 395 | 275 | 120 | 8,081 | 4,051 | 4,030 | 570,129 | 290,074 | 280,055 |
| 30-34 | 556,370 | 282,359 | 274,011 | 447 | 292 | 155 | 5,533 | 2,840 | 2,693 | 558,150 | 283,353 | 274,797 |
| 35-39 | 583,121 | 296,484 | 286,637 | 587 | 359 | 228 | 3,597 | 1,872 | 1,725 | 584,171 | 297,198 | 286,973 |
| 40-44 | 609,089 | 309,581 | 299,508 | 871 | 519 | 352 | 2,683 | 1,388 | 1,295 | 606,666 | 308,425 | 298,241 |
| 45-49 | 571,244 | 292,393 | 278,851 | 1,315 | 786 | 529 | 2,194 | 1,142 | 1,052 | 581,253 | 297,115 | 284,138 |
| 50-54 | 549,961 | 278,629 | 271,332 | 1,940 | 1,156 | 784 | 1,945 | 984 | 961 | 555,624 | 282,016 | 273,608 |
| 55-59 | 486,920 | 244,246 | 242,674 | 2,487 | 1,507 | 980 | 1,673 | 815 | 858 | 502,147 | 251,959 | 250,188 |
| 60-64 | 458,439 | 227,571 | 230,868 | 3,375 | 1,979 | 1,396 | 1,783 | 812 | 971 | 449,953 | 223,212 | 226,741 |
| 65-69 | 448,569 | 220,804 | 227,765 | 4,919 | 2,791 | 2,128 | 1,712 | 890 | 822 | 458,949 | 226,303 | 232,646 |
| 70-74 | 448,812 | 216,024 | 232,788 | 7,595 | 4,145 | 3,450 | 1,140 | 577 | 563 | 439,535 | 212,273 | 227,262 |
| 75-79 | 406,258 | 191,281 | 214,977 | 10,953 | 5,773 | 5,180 | 811 | 381 | 430 | 410,300 | 193,552 | 216,748 |
| 80-84 | 315,045 | 142,722 | 172,323 | 13,921 | 6,989 | 6,932 | 526 | 221 | 305 | 324,759 | 147,532 | 177,227 |
| 85+ | 309,197 | 133,163 | 176,034 | 32,675 | 14,351 | 18,324 | 229 | 109 | 120 | 326,709 | 141,059 | 185,650 |
| Total | 8,749,819 | 4,371,822 | 4,377,997 | 82,992 | 41,818 | 41,174 | 58,441 | 29,520 | 28,921 | 8,818,703 | 4,407,362 | 4,411,341 |

Fertility Measures: 2035-2036

| Age | Females | Births | 1yr Rate |
|--------------|-----------|--------|----------|
| 15-19 | 241,620 | 2,865 | .0119 |
| 20-24 | 266,314 | 14,943 | .0562 |
| 25-29 | 278,377 | 25,535 | .0917 |
| 30-34 | 274,337 | 29,130 | .1062 |
| 35-39 | 286,770 | 16,968 | .0592 |
| 40-44 | 298,851 | 3,994 | .0134 |
| Total | 1,646,269 | 93,435 | .3385 |

Summary Measures

| | 2035 | 2036 |
|-------------------------------|-------|-------|
| Child Dependency Ratio | 32.96 | 32.92 |
| Aged Dependency Ratio | 37.57 | 37.99 |
| Total Dependency Ratio | 70.53 | 70.91 |
| Sex Ratio | 99.86 | 99.91 |
| Male Life Expectancy | 81.37 | 81.54 |
| Female Life Expectancy | 84.46 | 84.57 |
| Total Fertility | 1.69 | 1.69 |
| General Fertility | 56.37 | 56.76 |

**Summary Population Report: 2036-2037
State of Washington**

| | |
|----------------|---------------|
| Infants | |
| Births | Deaths |
| 94,251 | 434 |

| Age | 2036 Base Population | | | Deaths | | | Net Migration | | | 2037 Estimated Population | | |
|--------------|----------------------|-----------|-----------|--------|--------|--------|---------------|--------|--------|---------------------------|-----------|-----------|
| | Total | Male | Female | Total | Male | Female | Total | Male | Female | Total | Male | Female |
| 0 | 93,000 | 47,604 | 45,396 | 802 | 426 | 376 | 750 | 383 | 367 | 93,817 | 48,023 | 45,794 |
| 1-4 | 373,031 | 190,907 | 182,124 | 122 | 66 | 56 | 4,578 | 2,344 | 2,234 | 375,955 | 192,407 | 183,548 |
| 5-9 | 473,644 | 242,361 | 231,283 | 42 | 23 | 19 | 4,575 | 2,341 | 2,234 | 477,106 | 244,140 | 232,966 |
| 10-14 | 474,689 | 242,942 | 231,747 | 45 | 24 | 21 | 3,336 | 1,733 | 1,603 | 479,061 | 245,198 | 233,863 |
| 15-19 | 489,455 | 250,370 | 239,085 | 163 | 112 | 51 | 4,930 | 2,550 | 2,380 | 482,749 | 246,943 | 235,806 |
| 20-24 | 546,539 | 279,107 | 267,432 | 331 | 239 | 92 | 8,583 | 4,194 | 4,389 | 548,124 | 279,926 | 268,198 |
| 25-29 | 570,129 | 290,074 | 280,055 | 396 | 274 | 122 | 8,200 | 4,109 | 4,091 | 573,643 | 291,610 | 282,033 |
| 30-34 | 558,150 | 283,353 | 274,797 | 443 | 290 | 153 | 5,591 | 2,873 | 2,718 | 567,522 | 288,405 | 279,117 |
| 35-39 | 584,171 | 297,198 | 286,973 | 580 | 355 | 225 | 3,623 | 1,885 | 1,738 | 582,427 | 296,354 | 286,073 |
| 40-44 | 606,666 | 308,425 | 298,241 | 859 | 510 | 349 | 2,684 | 1,388 | 1,296 | 602,122 | 305,747 | 296,375 |
| 45-49 | 581,253 | 297,115 | 284,138 | 1,321 | 788 | 533 | 2,245 | 1,168 | 1,077 | 595,507 | 304,082 | 291,425 |
| 50-54 | 555,624 | 282,016 | 273,608 | 1,942 | 1,158 | 784 | 1,974 | 1,000 | 974 | 557,191 | 283,344 | 273,847 |
| 55-59 | 502,147 | 251,959 | 250,188 | 2,537 | 1,536 | 1,001 | 1,732 | 844 | 888 | 517,317 | 259,977 | 257,340 |
| 60-64 | 449,953 | 223,212 | 226,741 | 3,267 | 1,911 | 1,356 | 1,757 | 799 | 958 | 450,509 | 223,481 | 227,028 |
| 65-69 | 458,949 | 226,303 | 232,646 | 4,981 | 2,825 | 2,156 | 1,763 | 918 | 845 | 463,454 | 228,800 | 234,654 |
| 70-74 | 439,535 | 212,273 | 227,262 | 7,381 | 4,033 | 3,348 | 1,120 | 567 | 553 | 431,171 | 208,564 | 222,607 |
| 75-79 | 410,300 | 193,552 | 216,748 | 10,958 | 5,778 | 5,180 | 825 | 388 | 437 | 411,920 | 194,758 | 217,162 |
| 80-84 | 324,759 | 147,532 | 177,227 | 14,244 | 7,153 | 7,091 | 546 | 230 | 316 | 333,020 | 151,813 | 181,207 |
| 85+ | 326,709 | 141,059 | 185,650 | 34,200 | 15,023 | 19,177 | 244 | 116 | 128 | 344,781 | 149,352 | 195,429 |
| Total | 8,818,703 | 4,407,362 | 4,411,341 | 84,614 | 42,524 | 42,090 | 59,056 | 29,830 | 29,226 | 8,887,396 | 4,442,924 | 4,444,472 |

Fertility Measures: 2036-2037

| Age | Females | Births | 1yr Rate |
|--------------|-----------|--------|----------|
| 15-19 | 237,532 | 2,826 | .0119 |
| 20-24 | 267,873 | 15,077 | .0564 |
| 25-29 | 280,995 | 25,859 | .0920 |
| 30-34 | 276,881 | 29,495 | .1065 |
| 35-39 | 286,491 | 17,009 | .0594 |
| 40-44 | 297,285 | 3,985 | .0134 |
| Total | 1,647,056 | 94,251 | .3396 |

Summary Measures

| | 2036 | 2037 |
|-------------------------------|-------|-------|
| Child Dependency Ratio | 32.92 | 32.93 |
| Aged Dependency Ratio | 37.99 | 38.21 |
| Total Dependency Ratio | 70.91 | 71.14 |
| Sex Ratio | 99.91 | 99.97 |
| Male Life Expectancy | 81.54 | 81.72 |
| Female Life Expectancy | 84.57 | 84.67 |
| Total Fertility | 1.69 | 1.70 |
| General Fertility | 56.76 | 57.22 |

**Summary Population Report: 2037-2038
State of Washington**

| |
|----------------|
| Infants |
| Births |
| 95,122 |
| Deaths |
| 435 |

| Age | 2037 Base Population | | | Deaths | | | Net Migration | | | 2038 Estimated Population | | |
|--------------|----------------------|-----------|-----------|--------|--------|--------|---------------|--------|--------|---------------------------|-----------|-----------|
| | Total | Male | Female | Total | Male | Female | Total | Male | Female | Total | Male | Female |
| 0 | 93,817 | 48,023 | 45,794 | 803 | 425 | 378 | 759 | 388 | 371 | 94,687 | 48,469 | 46,218 |
| 1-4 | 375,955 | 192,407 | 183,548 | 121 | 65 | 56 | 4,632 | 2,371 | 2,261 | 379,032 | 193,987 | 185,045 |
| 5-9 | 477,106 | 244,140 | 232,966 | 42 | 23 | 19 | 4,628 | 2,368 | 2,260 | 480,604 | 245,937 | 234,667 |
| 10-14 | 479,061 | 245,198 | 233,863 | 45 | 24 | 21 | 3,382 | 1,758 | 1,624 | 483,113 | 247,281 | 235,832 |
| 15-19 | 482,749 | 246,943 | 235,806 | 158 | 109 | 49 | 4,863 | 2,517 | 2,346 | 480,749 | 245,937 | 234,812 |
| 20-24 | 548,124 | 279,926 | 268,198 | 328 | 236 | 92 | 8,645 | 4,224 | 4,421 | 545,315 | 278,492 | 266,823 |
| 25-29 | 573,643 | 291,610 | 282,033 | 395 | 273 | 122 | 8,286 | 4,150 | 4,136 | 576,026 | 292,642 | 283,384 |
| 30-34 | 567,522 | 288,405 | 279,117 | 445 | 291 | 154 | 5,722 | 2,942 | 2,780 | 580,598 | 295,701 | 284,897 |
| 35-39 | 582,427 | 296,354 | 286,073 | 573 | 350 | 223 | 3,622 | 1,886 | 1,736 | 578,804 | 294,009 | 284,795 |
| 40-44 | 602,122 | 305,747 | 296,375 | 844 | 501 | 343 | 2,675 | 1,383 | 1,292 | 597,272 | 302,767 | 294,505 |
| 45-49 | 595,507 | 304,082 | 291,425 | 1,340 | 797 | 543 | 2,311 | 1,201 | 1,110 | 608,623 | 310,904 | 297,719 |
| 50-54 | 557,191 | 283,344 | 273,847 | 1,930 | 1,150 | 780 | 1,988 | 1,009 | 979 | 559,376 | 284,697 | 274,679 |
| 55-59 | 517,317 | 259,977 | 257,340 | 2,591 | 1,567 | 1,024 | 1,793 | 874 | 919 | 531,084 | 267,620 | 263,464 |
| 60-64 | 450,509 | 223,481 | 227,028 | 3,232 | 1,888 | 1,344 | 1,763 | 802 | 961 | 457,850 | 227,234 | 230,616 |
| 65-69 | 463,454 | 228,800 | 234,654 | 5,001 | 2,835 | 2,166 | 1,783 | 931 | 852 | 461,898 | 227,851 | 234,047 |
| 70-74 | 431,171 | 208,564 | 222,607 | 7,182 | 3,921 | 3,261 | 1,102 | 561 | 541 | 424,134 | 205,693 | 218,441 |
| 75-79 | 411,920 | 194,758 | 217,162 | 10,910 | 5,752 | 5,158 | 831 | 392 | 439 | 412,951 | 195,588 | 217,363 |
| 80-84 | 333,020 | 151,813 | 181,207 | 14,502 | 7,287 | 7,215 | 559 | 235 | 324 | 339,163 | 155,230 | 183,933 |
| 85+ | 344,781 | 149,352 | 195,429 | 35,753 | 15,720 | 20,033 | 259 | 124 | 135 | 364,647 | 158,489 | 206,158 |
| Total | 8,887,396 | 4,442,924 | 4,444,472 | 86,195 | 43,214 | 42,981 | 59,603 | 30,116 | 29,487 | 8,955,926 | 4,478,528 | 4,477,398 |

Fertility Measures: 2037-2038

| Age | Females | Births | 1yr Rate |
|--------------|-----------|--------|----------|
| 15-19 | 235,389 | 2,808 | .0119 |
| 20-24 | 267,576 | 15,111 | .0566 |
| 25-29 | 282,661 | 26,099 | .0923 |
| 30-34 | 281,927 | 30,131 | .1069 |
| 35-39 | 285,402 | 16,998 | .0596 |
| 40-44 | 295,417 | 3,975 | .0135 |
| Total | 1,648,372 | 95,122 | .3407 |

Summary Measures

| | 2037 | 2038 |
|-------------------------------|-------|--------|
| Child Dependency Ratio | 32.93 | 32.95 |
| Aged Dependency Ratio | 38.21 | 38.29 |
| Total Dependency Ratio | 71.14 | 71.24 |
| Sex Ratio | 99.97 | 100.03 |
| Male Life Expectancy | 81.72 | 81.89 |
| Female Life Expectancy | 84.67 | 84.78 |
| Total Fertility | 1.70 | 1.70 |
| General Fertility | 57.22 | 57.71 |

**Summary Population Report: 2038-2039
State of Washington**

| | |
|----------------|---------------|
| Infants | |
| Births | Deaths |
| 95,950 | 434 |

| Age | 2038 Base Population | | | Deaths | | | Net Migration | | | 2039 Estimated Population | | |
|--------------|----------------------|-----------|-----------|--------|--------|--------|---------------|--------|--------|---------------------------|-----------|-----------|
| | Total | Male | Female | Total | Male | Female | Total | Male | Female | Total | Male | Female |
| 0 | 94,687 | 48,469 | 46,218 | 802 | 424 | 378 | 769 | 393 | 376 | 95,516 | 48,894 | 46,622 |
| 1-4 | 379,032 | 193,987 | 185,045 | 121 | 65 | 56 | 4,686 | 2,399 | 2,287 | 382,298 | 195,663 | 186,635 |
| 5-9 | 480,604 | 245,937 | 234,667 | 42 | 23 | 19 | 4,677 | 2,393 | 2,284 | 484,157 | 247,763 | 236,394 |
| 10-14 | 483,113 | 247,281 | 235,832 | 45 | 24 | 21 | 3,422 | 1,778 | 1,644 | 486,946 | 249,248 | 237,698 |
| 15-19 | 480,749 | 245,937 | 234,812 | 154 | 106 | 48 | 4,839 | 2,502 | 2,337 | 482,540 | 246,875 | 235,665 |
| 20-24 | 545,315 | 278,492 | 266,823 | 324 | 233 | 91 | 8,629 | 4,217 | 4,412 | 539,792 | 275,670 | 264,122 |
| 25-29 | 576,026 | 292,642 | 283,384 | 390 | 269 | 121 | 8,350 | 4,179 | 4,171 | 579,139 | 294,510 | 284,629 |
| 30-34 | 580,598 | 295,701 | 284,897 | 452 | 294 | 158 | 5,877 | 3,027 | 2,850 | 590,562 | 300,520 | 290,042 |
| 35-39 | 578,804 | 294,009 | 284,795 | 563 | 343 | 220 | 3,608 | 1,875 | 1,733 | 577,411 | 292,945 | 284,466 |
| 40-44 | 597,272 | 302,767 | 294,505 | 829 | 490 | 339 | 2,664 | 1,375 | 1,289 | 595,296 | 302,236 | 293,060 |
| 45-49 | 608,623 | 310,904 | 297,719 | 1,359 | 807 | 552 | 2,366 | 1,230 | 1,136 | 615,746 | 313,674 | 302,072 |
| 50-54 | 559,376 | 284,697 | 274,679 | 1,918 | 1,142 | 776 | 2,004 | 1,018 | 986 | 565,933 | 288,387 | 277,546 |
| 55-59 | 531,084 | 267,620 | 263,464 | 2,636 | 1,596 | 1,040 | 1,847 | 904 | 943 | 542,702 | 273,885 | 268,817 |
| 60-64 | 457,850 | 227,234 | 230,616 | 3,248 | 1,896 | 1,352 | 1,797 | 818 | 979 | 467,835 | 232,591 | 235,244 |
| 65-69 | 461,898 | 227,851 | 234,047 | 4,961 | 2,805 | 2,156 | 1,776 | 928 | 848 | 455,741 | 224,590 | 231,151 |
| 70-74 | 424,134 | 205,693 | 218,441 | 6,990 | 3,819 | 3,171 | 1,091 | 556 | 535 | 422,046 | 205,470 | 216,576 |
| 75-79 | 412,951 | 195,588 | 217,363 | 10,833 | 5,710 | 5,123 | 834 | 394 | 440 | 413,428 | 196,155 | 217,273 |
| 80-84 | 339,163 | 155,230 | 183,933 | 14,639 | 7,363 | 7,276 | 572 | 243 | 329 | 343,325 | 157,924 | 185,401 |
| 85+ | 364,647 | 158,489 | 206,158 | 37,459 | 16,487 | 20,972 | 275 | 132 | 143 | 383,781 | 167,119 | 216,662 |
| Total | 8,955,926 | 4,478,528 | 4,477,398 | 87,765 | 43,896 | 43,869 | 60,083 | 30,361 | 29,722 | 9,024,194 | 4,514,119 | 4,510,075 |

Fertility Measures: 2038-2039

| Age | Females | Births | 1yr Rate |
|--------------|-----------|--------|----------|
| 15-19 | 235,314 | 2,818 | .0120 |
| 20-24 | 265,543 | 15,045 | .0567 |
| 25-29 | 283,960 | 26,303 | .0926 |
| 30-34 | 287,390 | 30,814 | .1072 |
| 35-39 | 284,597 | 17,006 | .0598 |
| 40-44 | 293,759 | 3,964 | .0135 |
| Total | 1,650,562 | 95,950 | .3418 |

Summary Measures

| | 2038 | 2039 |
|-------------------------------|--------|--------|
| Child Dependency Ratio | 32.95 | 33.02 |
| Aged Dependency Ratio | 38.29 | 38.32 |
| Total Dependency Ratio | 71.24 | 71.34 |
| Sex Ratio | 100.03 | 100.09 |
| Male Life Expectancy | 81.89 | 82.07 |
| Female Life Expectancy | 84.78 | 84.89 |
| Total Fertility | 1.70 | 1.71 |
| General Fertility | 57.71 | 58.13 |

**Summary Population Report: 2039-2040
State of Washington**

| |
|----------------|
| Infants |
| Births |
| 96,727 |
| Deaths |
| 433 |

| Age | 2039 Base Population | | | Deaths | | | Net Migration | | | 2040 Estimated Population | | |
|--------------|----------------------|-----------|-----------|--------|--------|--------|---------------|--------|--------|---------------------------|-----------|-----------|
| | Total | Male | Female | Total | Male | Female | Total | Male | Female | Total | Male | Female |
| 0 | 95,516 | 48,894 | 46,622 | 800 | 422 | 378 | 778 | 398 | 380 | 96,294 | 49,293 | 47,001 |
| 1-4 | 382,298 | 195,663 | 186,635 | 121 | 65 | 56 | 4,737 | 2,426 | 2,311 | 385,678 | 197,399 | 188,279 |
| 5-9 | 484,157 | 247,763 | 236,394 | 42 | 23 | 19 | 4,721 | 2,415 | 2,306 | 487,810 | 249,638 | 238,172 |
| 10-14 | 486,946 | 249,248 | 237,698 | 45 | 24 | 21 | 3,457 | 1,797 | 1,660 | 490,637 | 251,145 | 239,492 |
| 15-19 | 482,540 | 246,875 | 235,665 | 154 | 106 | 48 | 4,852 | 2,509 | 2,343 | 486,203 | 248,769 | 237,434 |
| 20-24 | 539,792 | 275,670 | 264,122 | 318 | 229 | 89 | 8,565 | 4,185 | 4,380 | 531,706 | 271,548 | 260,158 |
| 25-29 | 579,139 | 294,510 | 284,629 | 390 | 269 | 121 | 8,416 | 4,216 | 4,200 | 583,560 | 296,813 | 286,747 |
| 30-34 | 590,562 | 300,520 | 290,042 | 453 | 295 | 158 | 5,987 | 3,081 | 2,906 | 598,724 | 304,447 | 294,277 |
| 35-39 | 577,411 | 292,945 | 284,466 | 557 | 338 | 219 | 3,611 | 1,874 | 1,737 | 577,372 | 292,930 | 284,442 |
| 40-44 | 595,296 | 302,236 | 293,060 | 818 | 484 | 334 | 2,661 | 1,375 | 1,286 | 595,637 | 302,684 | 292,953 |
| 45-49 | 615,746 | 313,674 | 302,072 | 1,362 | 807 | 555 | 2,399 | 1,244 | 1,155 | 616,647 | 313,126 | 303,521 |
| 50-54 | 565,933 | 288,387 | 277,546 | 1,922 | 1,143 | 779 | 2,029 | 1,032 | 997 | 574,216 | 293,313 | 280,903 |
| 55-59 | 542,702 | 273,885 | 268,817 | 2,676 | 1,619 | 1,057 | 1,894 | 928 | 966 | 548,464 | 276,782 | 271,682 |
| 60-64 | 467,835 | 232,591 | 235,244 | 3,290 | 1,919 | 1,371 | 1,841 | 839 | 1,002 | 481,541 | 239,936 | 241,605 |
| 65-69 | 455,741 | 224,590 | 231,151 | 4,863 | 2,743 | 2,120 | 1,750 | 913 | 837 | 448,371 | 220,877 | 227,494 |
| 70-74 | 422,046 | 205,470 | 216,576 | 6,868 | 3,758 | 3,110 | 1,089 | 558 | 531 | 427,574 | 208,828 | 218,746 |
| 75-79 | 413,428 | 196,155 | 217,273 | 10,763 | 5,670 | 5,093 | 838 | 396 | 442 | 410,300 | 195,095 | 215,205 |
| 80-84 | 343,325 | 157,924 | 185,401 | 14,709 | 7,420 | 7,289 | 580 | 247 | 333 | 347,717 | 160,701 | 187,016 |
| 85+ | 383,781 | 167,119 | 216,662 | 39,056 | 17,183 | 21,873 | 291 | 140 | 151 | 403,759 | 176,375 | 227,384 |
| Total | 9,024,194 | 4,514,119 | 4,510,075 | 89,207 | 44,517 | 44,690 | 60,496 | 30,573 | 29,923 | 9,092,210 | 4,549,699 | 4,542,511 |

Fertility Measures: 2039-2040

| Age | Females | Births | 1yr Rate |
|--------------|-----------|--------|----------|
| 15-19 | 236,623 | 2,841 | .0120 |
| 20-24 | 262,215 | 14,906 | .0569 |
| 25-29 | 285,638 | 26,544 | .0929 |
| 30-34 | 292,082 | 31,420 | .1076 |
| 35-39 | 284,420 | 17,050 | .0599 |
| 40-44 | 292,982 | 3,966 | .0135 |
| Total | 1,653,958 | 96,727 | .3429 |

Summary Measures

| | 2039 | 2040 |
|-------------------------------|--------|--------|
| Child Dependency Ratio | 33.02 | 33.08 |
| Aged Dependency Ratio | 38.32 | 38.44 |
| Total Dependency Ratio | 71.34 | 71.52 |
| Sex Ratio | 100.09 | 100.16 |
| Male Life Expectancy | 82.07 | 82.24 |
| Female Life Expectancy | 84.89 | 85.00 |
| Total Fertility | 1.71 | 1.71 |
| General Fertility | 58.13 | 58.48 |

**Summary Population Report: 2040-2041
State of Washington**

| |
|----------------|
| Infants |
| Births |
| 97,477 |
| Deaths |
| 432 |

| Age | 2040 Base Population | | | Deaths | | | Net Migration | | | 2041 Estimated Population | | |
|--------------|----------------------|-----------|-----------|--------|--------|--------|---------------|--------|--------|---------------------------|-----------|-----------|
| | Total | Male | Female | Total | Male | Female | Total | Male | Female | Total | Male | Female |
| 0 | 96,294 | 49,293 | 47,001 | 799 | 421 | 378 | 790 | 404 | 386 | 97,045 | 49,678 | 47,367 |
| 1-4 | 385,678 | 197,399 | 188,279 | 121 | 65 | 56 | 4,821 | 2,469 | 2,352 | 389,121 | 199,167 | 189,954 |
| 5-9 | 487,810 | 249,638 | 238,172 | 42 | 23 | 19 | 4,800 | 2,456 | 2,344 | 491,660 | 251,612 | 240,048 |
| 10-14 | 490,637 | 251,145 | 239,492 | 45 | 24 | 21 | 3,513 | 1,826 | 1,687 | 494,332 | 253,046 | 241,286 |
| 15-19 | 486,203 | 248,769 | 237,434 | 153 | 105 | 48 | 4,925 | 2,547 | 2,378 | 492,295 | 251,912 | 240,383 |
| 20-24 | 531,706 | 271,548 | 260,158 | 310 | 222 | 88 | 8,511 | 4,160 | 4,351 | 521,211 | 266,193 | 255,018 |
| 25-29 | 583,560 | 296,813 | 286,747 | 387 | 267 | 120 | 8,553 | 4,285 | 4,268 | 588,950 | 299,563 | 289,387 |
| 30-34 | 598,724 | 304,447 | 294,277 | 455 | 296 | 159 | 6,115 | 3,144 | 2,971 | 605,407 | 307,611 | 297,796 |
| 35-39 | 577,372 | 292,930 | 284,442 | 551 | 334 | 217 | 3,647 | 1,894 | 1,753 | 579,409 | 294,069 | 285,340 |
| 40-44 | 595,637 | 302,684 | 292,953 | 809 | 478 | 331 | 2,686 | 1,389 | 1,297 | 596,816 | 303,473 | 293,343 |
| 45-49 | 616,647 | 313,126 | 303,521 | 1,353 | 797 | 556 | 2,423 | 1,253 | 1,170 | 614,295 | 312,016 | 302,279 |
| 50-54 | 574,216 | 293,313 | 280,903 | 1,926 | 1,146 | 780 | 2,078 | 1,059 | 1,019 | 584,421 | 298,138 | 286,283 |
| 55-59 | 548,464 | 276,782 | 271,682 | 2,674 | 1,615 | 1,059 | 1,928 | 945 | 983 | 554,262 | 280,243 | 274,019 |
| 60-64 | 481,541 | 239,936 | 241,605 | 3,346 | 1,952 | 1,394 | 1,910 | 873 | 1,037 | 496,785 | 247,633 | 249,152 |
| 65-69 | 448,371 | 220,877 | 227,494 | 4,722 | 2,657 | 2,065 | 1,740 | 907 | 833 | 440,373 | 216,825 | 223,548 |
| 70-74 | 427,574 | 208,828 | 218,746 | 6,851 | 3,753 | 3,098 | 1,117 | 574 | 543 | 437,809 | 214,249 | 223,560 |
| 75-79 | 410,300 | 195,095 | 215,205 | 10,586 | 5,575 | 5,011 | 839 | 398 | 441 | 402,133 | 191,926 | 210,207 |
| 80-84 | 347,717 | 160,701 | 187,016 | 14,749 | 7,460 | 7,289 | 595 | 255 | 340 | 351,738 | 162,947 | 188,791 |
| 85+ | 403,759 | 176,375 | 227,384 | 40,707 | 17,925 | 22,782 | 309 | 149 | 160 | 422,339 | 185,178 | 237,161 |
| Total | 9,092,210 | 4,549,699 | 4,542,511 | 90,586 | 45,115 | 45,471 | 61,300 | 30,987 | 30,313 | 9,160,401 | 4,585,479 | 4,574,922 |

Fertility Measures: 2040-2041

| Age | Females | Births | 1yr Rate |
|--------------|-----------|--------|----------|
| 15-19 | 238,979 | 2,878 | .0120 |
| 20-24 | 257,667 | 14,696 | .0571 |
| 25-29 | 288,015 | 26,852 | .0932 |
| 30-34 | 295,960 | 31,938 | .1079 |
| 35-39 | 284,855 | 17,131 | .0601 |
| 40-44 | 293,123 | 3,982 | .0136 |
| Total | 1,658,599 | 97,477 | .3440 |

Summary Measures

| | 2040 | 2041 |
|-------------------------------|--------|--------|
| Child Dependency Ratio | 33.08 | 33.12 |
| Aged Dependency Ratio | 38.44 | 38.49 |
| Total Dependency Ratio | 71.52 | 71.60 |
| Sex Ratio | 100.16 | 100.23 |
| Male Life Expectancy | 82.24 | 82.42 |
| Female Life Expectancy | 85.00 | 85.10 |
| Total Fertility | 1.71 | 1.72 |
| General Fertility | 58.48 | 58.77 |

**Summary Population Report: 2041-2042
State of Washington**

| | |
|----------------|---------------|
| Infants | |
| Births | Deaths |
| 98,208 | 431 |

| Age | 2041 Base Population | | | Deaths | | | Net Migration | | | 2042 Estimated Population | | |
|--------------|----------------------|-----------|-----------|--------|--------|--------|---------------|--------|--------|---------------------------|-----------|-----------|
| | Total | Male | Female | Total | Male | Female | Total | Male | Female | Total | Male | Female |
| 0 | 97,045 | 49,678 | 47,367 | 797 | 419 | 378 | 794 | 406 | 388 | 97,777 | 50,053 | 47,724 |
| 1-4 | 389,121 | 199,167 | 189,954 | 120 | 64 | 56 | 4,842 | 2,479 | 2,363 | 392,462 | 200,881 | 191,581 |
| 5-9 | 491,660 | 251,612 | 240,048 | 42 | 23 | 19 | 4,815 | 2,464 | 2,351 | 495,691 | 253,682 | 242,009 |
| 10-14 | 494,332 | 253,046 | 241,286 | 45 | 24 | 21 | 3,522 | 1,831 | 1,691 | 498,008 | 254,936 | 243,072 |
| 15-19 | 492,295 | 251,912 | 240,383 | 153 | 105 | 48 | 4,971 | 2,571 | 2,400 | 496,882 | 254,279 | 242,603 |
| 20-24 | 521,211 | 266,193 | 255,018 | 300 | 215 | 85 | 8,306 | 4,060 | 4,246 | 514,084 | 262,566 | 251,518 |
| 25-29 | 588,950 | 299,563 | 289,387 | 389 | 268 | 121 | 8,592 | 4,306 | 4,286 | 590,806 | 300,523 | 290,283 |
| 30-34 | 605,407 | 307,611 | 297,796 | 456 | 296 | 160 | 6,139 | 3,154 | 2,985 | 609,273 | 309,315 | 299,958 |
| 35-39 | 579,409 | 294,069 | 285,340 | 547 | 332 | 215 | 3,648 | 1,896 | 1,752 | 589,291 | 299,397 | 289,894 |
| 40-44 | 596,816 | 303,473 | 293,343 | 804 | 474 | 330 | 2,680 | 1,387 | 1,293 | 595,097 | 302,650 | 292,447 |
| 45-49 | 614,295 | 312,016 | 302,279 | 1,336 | 787 | 549 | 2,400 | 1,241 | 1,159 | 609,780 | 309,359 | 300,421 |
| 50-54 | 584,421 | 298,138 | 286,283 | 1,939 | 1,151 | 788 | 2,107 | 1,073 | 1,034 | 598,863 | 305,198 | 293,665 |
| 55-59 | 554,262 | 280,243 | 274,019 | 2,679 | 1,618 | 1,061 | 1,941 | 952 | 989 | 555,951 | 281,649 | 274,302 |
| 60-64 | 496,785 | 247,633 | 249,152 | 3,417 | 1,992 | 1,425 | 1,960 | 896 | 1,064 | 511,957 | 255,626 | 256,331 |
| 65-69 | 440,373 | 216,825 | 223,548 | 4,575 | 2,569 | 2,006 | 1,708 | 890 | 818 | 441,170 | 217,241 | 223,929 |
| 70-74 | 437,809 | 214,249 | 223,560 | 6,941 | 3,802 | 3,139 | 1,137 | 586 | 551 | 442,264 | 216,731 | 225,533 |
| 75-79 | 402,133 | 191,926 | 210,207 | 10,301 | 5,433 | 4,868 | 818 | 389 | 429 | 394,809 | 188,796 | 206,013 |
| 80-84 | 351,738 | 162,947 | 188,791 | 14,786 | 7,483 | 7,303 | 598 | 257 | 341 | 353,609 | 164,281 | 189,328 |
| 85+ | 422,339 | 185,178 | 237,161 | 42,185 | 18,603 | 23,582 | 322 | 156 | 166 | 440,323 | 193,934 | 246,389 |
| Total | 9,160,401 | 4,585,479 | 4,574,922 | 91,812 | 45,658 | 46,154 | 61,300 | 30,994 | 30,306 | 9,228,097 | 4,621,097 | 4,607,000 |

Fertility Measures: 2041-2042

| Age | Females | Births | 1yr Rate |
|--------------|-----------|--------|----------|
| 15-19 | 241,567 | 2,920 | .0121 |
| 20-24 | 253,341 | 14,491 | .0573 |
| 25-29 | 289,789 | 27,104 | .0935 |
| 30-34 | 298,801 | 32,349 | .1083 |
| 35-39 | 287,576 | 17,351 | .0603 |
| 40-44 | 292,872 | 3,993 | .0136 |
| Total | 1,663,944 | 98,208 | .3451 |

Summary Measures

| | 2041 | 2042 |
|-------------------------------|--------|--------|
| Child Dependency Ratio | 33.12 | 33.16 |
| Aged Dependency Ratio | 38.49 | 38.56 |
| Total Dependency Ratio | 71.60 | 71.72 |
| Sex Ratio | 100.23 | 100.31 |
| Male Life Expectancy | 82.42 | 82.59 |
| Female Life Expectancy | 85.10 | 85.21 |
| Total Fertility | 1.72 | 1.73 |
| General Fertility | 58.77 | 59.02 |

**Summary Population Report: 2042-2043
State of Washington**

Infants
Births **Deaths**
98,895 430

| Age | 2042 Base Population | | | Deaths | | | Net Migration | | | 2043 Estimated Population | | |
|--------------|----------------------|-----------|-----------|--------|--------|--------|---------------|--------|--------|---------------------------|-----------|-----------|
| | Total | Male | Female | Total | Male | Female | Total | Male | Female | Total | Male | Female |
| 0 | 97,777 | 50,053 | 47,724 | 795 | 417 | 378 | 796 | 407 | 389 | 98,465 | 50,406 | 48,059 |
| 1-4 | 392,462 | 200,881 | 191,581 | 120 | 64 | 56 | 4,860 | 2,488 | 2,372 | 395,629 | 202,506 | 193,123 |
| 5-9 | 495,691 | 253,682 | 242,009 | 42 | 23 | 19 | 4,833 | 2,473 | 2,360 | 499,898 | 255,843 | 244,055 |
| 10-14 | 498,008 | 254,936 | 243,072 | 43 | 22 | 21 | 3,533 | 1,837 | 1,696 | 501,691 | 256,829 | 244,862 |
| 15-19 | 496,882 | 254,279 | 242,603 | 153 | 105 | 48 | 4,995 | 2,584 | 2,411 | 501,100 | 256,448 | 244,652 |
| 20-24 | 514,084 | 262,566 | 251,518 | 294 | 210 | 84 | 8,150 | 3,984 | 4,166 | 511,908 | 261,480 | 250,428 |
| 25-29 | 590,806 | 300,523 | 290,283 | 386 | 265 | 121 | 8,576 | 4,297 | 4,279 | 587,838 | 299,020 | 288,818 |
| 30-34 | 609,273 | 309,315 | 299,958 | 456 | 295 | 161 | 6,149 | 3,158 | 2,991 | 611,899 | 310,465 | 301,434 |
| 35-39 | 589,291 | 299,397 | 289,894 | 549 | 332 | 217 | 3,699 | 1,924 | 1,775 | 602,938 | 307,007 | 295,931 |
| 40-44 | 595,097 | 302,650 | 292,447 | 793 | 467 | 326 | 2,659 | 1,377 | 1,282 | 591,434 | 300,278 | 291,156 |
| 45-49 | 609,780 | 309,359 | 300,421 | 1,313 | 771 | 542 | 2,372 | 1,226 | 1,146 | 604,942 | 306,394 | 298,548 |
| 50-54 | 598,863 | 305,198 | 293,665 | 1,967 | 1,165 | 802 | 2,149 | 1,093 | 1,056 | 612,132 | 312,098 | 300,034 |
| 55-59 | 555,951 | 281,649 | 274,302 | 2,664 | 1,610 | 1,054 | 1,936 | 952 | 984 | 558,248 | 283,074 | 275,174 |
| 60-64 | 511,957 | 255,626 | 256,331 | 3,487 | 2,031 | 1,456 | 2,011 | 921 | 1,090 | 525,720 | 263,243 | 262,477 |
| 65-69 | 441,170 | 217,241 | 223,929 | 4,530 | 2,539 | 1,991 | 1,708 | 889 | 819 | 448,567 | 221,020 | 227,547 |
| 70-74 | 442,264 | 216,731 | 225,533 | 6,974 | 3,819 | 3,155 | 1,142 | 588 | 554 | 440,883 | 215,912 | 224,971 |
| 75-79 | 394,809 | 188,796 | 206,013 | 10,036 | 5,292 | 4,744 | 799 | 381 | 418 | 388,802 | 186,477 | 202,325 |
| 80-84 | 353,609 | 164,281 | 189,328 | 14,745 | 7,467 | 7,278 | 598 | 257 | 341 | 355,039 | 165,325 | 189,714 |
| 85+ | 440,323 | 193,934 | 246,389 | 43,575 | 19,259 | 24,316 | 335 | 163 | 172 | 458,237 | 202,752 | 255,485 |
| Total | 9,228,097 | 4,621,097 | 4,607,000 | 92,922 | 46,153 | 46,769 | 61,300 | 30,999 | 30,301 | 9,295,370 | 4,656,577 | 4,638,793 |

Fertility Measures: 2042-2043

| Age | Females | Births | 1yr Rate |
|--------------|-----------|--------|----------|
| 15-19 | 243,702 | 2,956 | .0121 |
| 20-24 | 251,036 | 14,405 | .0575 |
| 25-29 | 289,514 | 27,166 | .0938 |
| 30-34 | 300,621 | 32,652 | .1086 |
| 35-39 | 292,869 | 17,727 | .0605 |
| 40-44 | 291,779 | 3,989 | .0137 |
| Total | 1,669,520 | 98,895 | .3462 |

Summary Measures

| | 2042 | 2043 |
|-------------------------------|--------|--------|
| Child Dependency Ratio | 33.16 | 33.21 |
| Aged Dependency Ratio | 38.56 | 38.68 |
| Total Dependency Ratio | 71.72 | 71.89 |
| Sex Ratio | 100.31 | 100.38 |
| Male Life Expectancy | 82.59 | 82.76 |
| Female Life Expectancy | 85.21 | 85.32 |
| Total Fertility | 1.73 | 1.73 |
| General Fertility | 59.02 | 59.24 |

**Summary Population Report: 2043-2044
State of Washington**

| |
|----------------|
| Infants |
| Births |
| 99,510 |
| Deaths |
| 428 |

| Age | 2043 Base Population | | | Deaths | | | Net Migration | | | 2044 Estimated Population | | |
|--------------|----------------------|-----------|-----------|--------|--------|--------|---------------|--------|--------|---------------------------|-----------|-----------|
| | Total | Male | Female | Total | Male | Female | Total | Male | Female | Total | Male | Female |
| 0 | 98,465 | 50,406 | 48,059 | 792 | 415 | 377 | 798 | 408 | 390 | 99,082 | 50,722 | 48,360 |
| 1-4 | 395,629 | 202,506 | 193,123 | 120 | 64 | 56 | 4,876 | 2,496 | 2,380 | 398,628 | 204,046 | 194,582 |
| 5-9 | 499,898 | 255,843 | 244,055 | 42 | 23 | 19 | 4,850 | 2,481 | 2,369 | 504,218 | 258,058 | 246,160 |
| 10-14 | 501,691 | 256,829 | 244,862 | 43 | 22 | 21 | 3,540 | 1,840 | 1,700 | 505,394 | 258,733 | 246,661 |
| 15-19 | 501,100 | 256,448 | 244,652 | 153 | 105 | 48 | 5,017 | 2,595 | 2,422 | 505,065 | 258,484 | 246,581 |
| 20-24 | 511,908 | 261,480 | 250,428 | 288 | 206 | 82 | 8,076 | 3,949 | 4,127 | 513,743 | 262,450 | 251,293 |
| 25-29 | 587,838 | 299,020 | 288,818 | 379 | 260 | 119 | 8,484 | 4,252 | 4,232 | 581,866 | 295,988 | 285,878 |
| 30-34 | 611,899 | 310,465 | 301,434 | 452 | 292 | 160 | 6,152 | 3,159 | 2,993 | 615,217 | 312,457 | 302,760 |
| 35-39 | 602,938 | 307,007 | 295,931 | 556 | 337 | 219 | 3,770 | 1,965 | 1,805 | 613,283 | 312,007 | 301,276 |
| 40-44 | 591,434 | 300,278 | 291,156 | 781 | 459 | 322 | 2,630 | 1,359 | 1,271 | 590,050 | 299,219 | 290,831 |
| 45-49 | 604,942 | 306,394 | 298,548 | 1,287 | 753 | 534 | 2,343 | 1,208 | 1,135 | 602,992 | 305,892 | 297,100 |
| 50-54 | 612,132 | 312,098 | 300,034 | 1,992 | 1,178 | 814 | 2,185 | 1,112 | 1,073 | 619,352 | 314,919 | 304,433 |
| 55-59 | 558,248 | 283,074 | 275,174 | 2,647 | 1,597 | 1,050 | 1,934 | 952 | 982 | 564,897 | 286,820 | 278,077 |
| 60-64 | 525,720 | 263,243 | 262,477 | 3,552 | 2,070 | 1,482 | 2,056 | 944 | 1,112 | 537,327 | 269,486 | 267,841 |
| 65-69 | 448,567 | 221,020 | 227,547 | 4,556 | 2,552 | 2,004 | 1,730 | 901 | 829 | 458,506 | 226,346 | 232,160 |
| 70-74 | 440,883 | 215,912 | 224,971 | 6,922 | 3,783 | 3,139 | 1,131 | 582 | 549 | 435,150 | 212,927 | 222,223 |
| 75-79 | 388,802 | 186,477 | 202,325 | 9,776 | 5,160 | 4,616 | 782 | 374 | 408 | 387,381 | 186,586 | 200,795 |
| 80-84 | 355,039 | 165,325 | 189,714 | 14,670 | 7,429 | 7,241 | 599 | 259 | 340 | 355,886 | 166,095 | 189,791 |
| 85+ | 458,237 | 202,752 | 255,485 | 44,930 | 19,905 | 25,025 | 347 | 169 | 178 | 474,205 | 210,686 | 263,519 |
| Total | 9,295,370 | 4,656,577 | 4,638,793 | 93,938 | 46,610 | 47,328 | 61,300 | 31,005 | 30,295 | 9,362,242 | 4,691,921 | 4,670,321 |

Fertility Measures: 2043-2044

| Age | Females | Births | 1yr Rate |
|--------------|-----------|--------|----------|
| 15-19 | 245,692 | 2,990 | .0122 |
| 20-24 | 250,916 | 14,447 | .0577 |
| 25-29 | 287,317 | 27,045 | .0941 |
| 30-34 | 302,023 | 32,908 | .1090 |
| 35-39 | 298,561 | 18,129 | .0607 |
| 40-44 | 290,970 | 3,991 | .0137 |
| Total | 1,675,478 | 99,510 | .3474 |

Summary Measures

| | 2043 | 2044 |
|-------------------------------|--------|--------|
| Child Dependency Ratio | 33.21 | 33.26 |
| Aged Dependency Ratio | 38.68 | 38.80 |
| Total Dependency Ratio | 71.89 | 72.06 |
| Sex Ratio | 100.38 | 100.46 |
| Male Life Expectancy | 82.76 | 82.94 |
| Female Life Expectancy | 85.32 | 85.43 |
| Total Fertility | 1.73 | 1.74 |
| General Fertility | 59.24 | 59.39 |

**Summary Population Report: 2044-2045
State of Washington**

Infants
Births 100,074
Deaths 427

| Age | 2044 Base Population | | | Deaths | | | Net Migration | | | 2045 Estimated Population | | |
|--------------|----------------------|------------------|------------------|---------------|---------------|---------------|---------------|---------------|---------------|---------------------------|------------------|------------------|
| | Total | Male | Female | Total | Male | Female | Total | Male | Female | Total | Male | Female |
| 0 | 99,082 | 50,722 | 48,360 | 790 | 413 | 377 | 798 | 408 | 390 | 99,647 | 51,011 | 48,636 |
| 1-4 | 398,628 | 204,046 | 194,582 | 119 | 63 | 56 | 4,887 | 2,502 | 2,385 | 401,448 | 205,494 | 195,954 |
| 5-9 | 504,218 | 258,058 | 246,160 | 42 | 23 | 19 | 4,870 | 2,491 | 2,379 | 508,560 | 260,286 | 248,274 |
| 10-14 | 505,394 | 258,733 | 246,661 | 43 | 22 | 21 | 3,551 | 1,845 | 1,706 | 509,175 | 260,674 | 248,501 |
| 15-19 | 505,065 | 258,484 | 246,581 | 153 | 105 | 48 | 5,033 | 2,604 | 2,429 | 508,857 | 260,434 | 248,423 |
| 20-24 | 513,743 | 262,450 | 251,293 | 286 | 204 | 82 | 8,064 | 3,942 | 4,122 | 517,549 | 264,420 | 253,129 |
| 25-29 | 581,866 | 295,988 | 285,878 | 372 | 254 | 118 | 8,346 | 4,184 | 4,162 | 573,071 | 291,534 | 281,537 |
| 30-34 | 615,217 | 312,457 | 302,760 | 450 | 290 | 160 | 6,159 | 3,165 | 2,994 | 619,876 | 314,886 | 304,990 |
| 35-39 | 613,283 | 312,007 | 301,276 | 562 | 340 | 222 | 3,812 | 1,985 | 1,827 | 621,704 | 316,061 | 305,643 |
| 40-44 | 590,050 | 299,219 | 290,831 | 772 | 452 | 320 | 2,612 | 1,348 | 1,264 | 590,042 | 299,229 | 290,813 |
| 45-49 | 602,992 | 305,892 | 297,100 | 1,273 | 744 | 529 | 2,325 | 1,201 | 1,124 | 603,369 | 306,371 | 296,998 |
| 50-54 | 619,352 | 314,919 | 304,433 | 2,000 | 1,180 | 820 | 2,201 | 1,116 | 1,085 | 620,302 | 314,403 | 305,899 |
| 55-59 | 564,897 | 286,820 | 278,077 | 2,653 | 1,600 | 1,053 | 1,949 | 961 | 988 | 573,275 | 291,802 | 281,473 |
| 60-64 | 537,327 | 269,486 | 267,841 | 3,607 | 2,101 | 1,506 | 2,095 | 965 | 1,130 | 543,166 | 272,434 | 270,732 |
| 65-69 | 458,506 | 226,346 | 232,160 | 4,617 | 2,585 | 2,032 | 1,757 | 917 | 840 | 472,155 | 233,641 | 238,514 |
| 70-74 | 435,150 | 212,927 | 222,223 | 6,794 | 3,703 | 3,091 | 1,108 | 570 | 538 | 428,465 | 209,631 | 218,834 |
| 75-79 | 387,381 | 186,586 | 200,795 | 9,619 | 5,088 | 4,531 | 779 | 374 | 405 | 393,059 | 190,002 | 203,057 |
| 80-84 | 355,886 | 166,095 | 189,791 | 14,600 | 7,395 | 7,205 | 596 | 257 | 339 | 353,695 | 165,527 | 188,168 |
| 85+ | 474,205 | 210,686 | 263,519 | 46,068 | 20,449 | 25,619 | 358 | 175 | 183 | 491,381 | 219,317 | 272,064 |
| Total | 9,362,242 | 4,691,921 | 4,670,321 | 94,820 | 47,011 | 47,809 | 61,300 | 31,010 | 30,290 | 9,428,796 | 4,727,157 | 4,701,639 |

Fertility Measures: 2044-2045

| Age | Females | Births | 1yr Rate |
|--------------|------------------|----------------|--------------|
| 15-19 | 247,578 | 3,021 | .0122 |
| 20-24 | 252,262 | 14,574 | .0578 |
| 25-29 | 283,681 | 26,787 | .0944 |
| 30-34 | 303,799 | 33,208 | .1093 |
| 35-39 | 303,418 | 18,483 | .0609 |
| 40-44 | 290,798 | 4,001 | .0138 |
| Total | 1,681,535 | 100,074 | .3485 |

Summary Measures

| | 2044 | 2045 |
|-------------------------------|--------|--------|
| Child Dependency Ratio | 33.26 | 33.36 |
| Aged Dependency Ratio | 38.80 | 39.13 |
| Total Dependency Ratio | 72.06 | 72.49 |
| Sex Ratio | 100.46 | 100.54 |
| Male Life Expectancy | 82.94 | 83.11 |
| Female Life Expectancy | 85.43 | 85.53 |
| Total Fertility | 1.74 | 1.74 |
| General Fertility | 59.39 | 59.51 |

**Summary Population Report: 2045-2046
State of Washington**

Infants
Births **Deaths**
 100,602 425

| Age | 2045 Base Population | | | Deaths | | | Net Migration | | | 2046 Estimated Population | | |
|--------------|----------------------|-----------|-----------|--------|--------|--------|---------------|--------|--------|---------------------------|-----------|-----------|
| | Total | Male | Female | Total | Male | Female | Total | Male | Female | Total | Male | Female |
| 0 | 99,647 | 51,011 | 48,636 | 787 | 410 | 377 | 800 | 409 | 391 | 100,177 | 51,284 | 48,893 |
| 1-4 | 401,448 | 205,494 | 195,954 | 119 | 63 | 56 | 4,900 | 2,508 | 2,392 | 404,078 | 206,843 | 197,235 |
| 5-9 | 508,560 | 260,286 | 248,274 | 42 | 23 | 19 | 4,887 | 2,500 | 2,387 | 512,861 | 262,494 | 250,367 |
| 10-14 | 509,175 | 260,674 | 248,501 | 43 | 22 | 21 | 3,562 | 1,852 | 1,710 | 513,094 | 262,684 | 250,410 |
| 15-19 | 508,857 | 260,434 | 248,423 | 153 | 105 | 48 | 5,046 | 2,611 | 2,435 | 512,606 | 262,364 | 250,242 |
| 20-24 | 517,549 | 264,420 | 253,129 | 286 | 204 | 82 | 8,083 | 3,952 | 4,131 | 523,904 | 267,698 | 256,206 |
| 25-29 | 573,071 | 291,534 | 281,537 | 364 | 248 | 116 | 8,175 | 4,100 | 4,075 | 561,571 | 285,697 | 275,874 |
| 30-34 | 619,876 | 314,886 | 304,990 | 448 | 288 | 160 | 6,176 | 3,174 | 3,002 | 625,429 | 317,722 | 307,707 |
| 35-39 | 621,704 | 316,061 | 305,643 | 565 | 341 | 224 | 3,840 | 1,997 | 1,843 | 628,485 | 319,272 | 309,213 |
| 40-44 | 590,042 | 299,229 | 290,813 | 764 | 447 | 317 | 2,600 | 1,342 | 1,258 | 592,109 | 300,392 | 291,717 |
| 45-49 | 603,369 | 306,371 | 296,998 | 1,259 | 735 | 524 | 2,316 | 1,197 | 1,119 | 604,547 | 307,171 | 297,376 |
| 50-54 | 620,302 | 314,403 | 305,899 | 1,986 | 1,165 | 821 | 2,194 | 1,110 | 1,084 | 617,947 | 313,304 | 304,643 |
| 55-59 | 573,275 | 291,802 | 281,473 | 2,661 | 1,606 | 1,055 | 1,970 | 974 | 996 | 583,547 | 296,662 | 286,885 |
| 60-64 | 543,166 | 272,434 | 270,732 | 3,609 | 2,099 | 1,510 | 2,107 | 969 | 1,138 | 548,999 | 275,917 | 273,082 |
| 65-69 | 472,155 | 233,641 | 238,514 | 4,695 | 2,629 | 2,066 | 1,807 | 945 | 862 | 487,250 | 241,242 | 246,008 |
| 70-74 | 428,465 | 209,631 | 218,834 | 6,606 | 3,593 | 3,013 | 1,088 | 559 | 529 | 421,165 | 206,003 | 215,162 |
| 75-79 | 393,059 | 190,002 | 203,057 | 9,607 | 5,090 | 4,517 | 790 | 382 | 408 | 402,853 | 195,182 | 207,671 |
| 80-84 | 353,695 | 165,527 | 188,168 | 14,383 | 7,287 | 7,096 | 589 | 255 | 334 | 347,024 | 163,093 | 183,931 |
| 85+ | 491,381 | 219,317 | 272,064 | 47,300 | 21,047 | 26,253 | 370 | 182 | 188 | 507,375 | 227,257 | 280,118 |
| Total | 9,428,796 | 4,727,157 | 4,701,639 | 95,677 | 47,402 | 48,275 | 61,300 | 31,018 | 30,282 | 9,495,021 | 4,762,281 | 4,732,740 |

Fertility Measures: 2045-2046

| Age | Females | Births | 1yr Rate |
|--------------|-----------|---------|----------|
| 15-19 | 249,408 | 3,054 | .0122 |
| 20-24 | 254,714 | 14,759 | .0580 |
| 25-29 | 278,684 | 26,400 | .0947 |
| 30-34 | 306,271 | 33,585 | .1097 |
| 35-39 | 307,388 | 18,784 | .0611 |
| 40-44 | 291,240 | 4,020 | .0138 |
| Total | 1,687,705 | 100,602 | .3496 |

Summary Measures

| | 2045 | 2046 |
|-------------------------------|--------|--------|
| Child Dependency Ratio | 33.36 | 33.46 |
| Aged Dependency Ratio | 39.13 | 39.43 |
| Total Dependency Ratio | 72.49 | 72.89 |
| Sex Ratio | 100.54 | 100.62 |
| Male Life Expectancy | 83.11 | 83.29 |
| Female Life Expectancy | 85.53 | 85.64 |
| Total Fertility | 1.74 | 1.75 |
| General Fertility | 59.51 | 59.61 |

**Summary Population Report: 2046-2047
State of Washington**

Infants
Births **Deaths**
101,054 423

| Age | 2046 Base Population | | | Deaths | | | Net Migration | | | 2047 Estimated Population | | |
|--------------|----------------------|------------------|------------------|---------------|---------------|---------------|---------------|---------------|---------------|---------------------------|------------------|------------------|
| | Total | Male | Female | Total | Male | Female | Total | Male | Female | Total | Male | Female |
| 0 | 100,177 | 51,284 | 48,893 | 783 | 408 | 375 | 800 | 409 | 391 | 100,631 | 51,516 | 49,115 |
| 1-4 | 404,078 | 206,843 | 197,235 | 119 | 63 | 56 | 4,910 | 2,514 | 2,396 | 406,502 | 208,088 | 198,414 |
| 5-9 | 512,861 | 262,494 | 250,367 | 42 | 23 | 19 | 4,905 | 2,510 | 2,395 | 517,028 | 264,632 | 252,396 |
| 10-14 | 513,094 | 262,684 | 250,410 | 43 | 22 | 21 | 3,571 | 1,857 | 1,714 | 517,201 | 264,793 | 252,408 |
| 15-19 | 512,606 | 262,364 | 250,242 | 153 | 105 | 48 | 5,058 | 2,617 | 2,441 | 516,331 | 264,281 | 252,050 |
| 20-24 | 523,904 | 267,698 | 256,206 | 286 | 203 | 83 | 8,145 | 3,983 | 4,162 | 528,645 | 270,145 | 258,500 |
| 25-29 | 561,571 | 285,697 | 275,874 | 351 | 240 | 111 | 7,973 | 3,998 | 3,975 | 553,715 | 281,719 | 271,996 |
| 30-34 | 625,429 | 317,722 | 307,707 | 448 | 288 | 160 | 6,199 | 3,185 | 3,014 | 627,217 | 318,654 | 308,563 |
| 35-39 | 628,485 | 319,272 | 309,213 | 566 | 340 | 226 | 3,857 | 2,004 | 1,853 | 632,407 | 321,003 | 311,404 |
| 40-44 | 592,109 | 300,392 | 291,717 | 756 | 441 | 315 | 2,597 | 1,340 | 1,257 | 602,188 | 305,830 | 296,358 |
| 45-49 | 604,547 | 307,171 | 297,376 | 1,249 | 728 | 521 | 2,310 | 1,195 | 1,115 | 602,787 | 306,334 | 296,453 |
| 50-54 | 617,947 | 313,304 | 304,643 | 1,961 | 1,149 | 812 | 2,174 | 1,100 | 1,074 | 613,429 | 310,663 | 302,766 |
| 55-59 | 583,547 | 296,662 | 286,885 | 2,680 | 1,613 | 1,067 | 1,995 | 985 | 1,010 | 598,031 | 303,739 | 294,292 |
| 60-64 | 548,999 | 275,917 | 273,082 | 3,615 | 2,102 | 1,513 | 2,120 | 978 | 1,142 | 550,759 | 277,378 | 273,381 |
| 65-69 | 487,250 | 241,242 | 246,008 | 4,798 | 2,684 | 2,114 | 1,857 | 971 | 886 | 502,266 | 249,135 | 253,131 |
| 70-74 | 421,165 | 206,003 | 215,162 | 6,406 | 3,477 | 2,929 | 1,067 | 549 | 518 | 422,222 | 206,586 | 215,636 |
| 75-79 | 402,853 | 195,182 | 207,671 | 9,745 | 5,164 | 4,581 | 806 | 390 | 416 | 407,128 | 197,574 | 209,554 |
| 80-84 | 347,024 | 163,093 | 183,931 | 14,015 | 7,116 | 6,899 | 575 | 250 | 325 | 341,091 | 160,692 | 180,399 |
| 85+ | 507,375 | 227,257 | 280,118 | 48,391 | 21,561 | 26,830 | 381 | 188 | 193 | 521,390 | 234,554 | 286,836 |
| Total | 9,495,021 | 4,762,281 | 4,732,740 | 96,407 | 47,727 | 48,680 | 61,300 | 31,023 | 30,277 | 9,560,968 | 4,797,316 | 4,763,652 |

Fertility Measures: 2046-2047

| Age | Females | Births | 1yr Rate |
|--------------|------------------|----------------|--------------|
| 15-19 | 251,222 | 3,084 | .0123 |
| 20-24 | 257,403 | 14,961 | .0582 |
| 25-29 | 273,907 | 26,030 | .0950 |
| 30-34 | 308,062 | 33,888 | .1100 |
| 35-39 | 310,269 | 19,020 | .0613 |
| 40-44 | 294,009 | 4,071 | .0138 |
| Total | 1,694,872 | 101,054 | .3507 |

Summary Measures

| | 2046 | 2047 |
|-------------------------------|--------|--------|
| Child Dependency Ratio | 33.46 | 33.55 |
| Aged Dependency Ratio | 39.43 | 39.78 |
| Total Dependency Ratio | 72.89 | 73.33 |
| Sex Ratio | 100.62 | 100.71 |
| Male Life Expectancy | 83.29 | 83.46 |
| Female Life Expectancy | 85.64 | 85.75 |
| Total Fertility | 1.75 | 1.75 |
| General Fertility | 59.61 | 59.62 |

**Summary Population Report: 2047-2048
State of Washington**

| |
|----------------|
| Infants |
| Births |
| 101,424 |
| Deaths |
| 420 |

| Age | 2047 Base Population | | | Deaths | | | Net Migration | | | 2048 Estimated Population | | |
|--------------|----------------------|-----------|-----------|--------|--------|--------|---------------|--------|--------|---------------------------|-----------|-----------|
| | Total | Male | Female | Total | Male | Female | Total | Male | Female | Total | Male | Female |
| 0 | 100,631 | 51,516 | 49,115 | 779 | 405 | 374 | 800 | 409 | 391 | 101,004 | 51,708 | 49,296 |
| 1-4 | 406,502 | 208,088 | 198,414 | 118 | 62 | 56 | 4,914 | 2,516 | 2,398 | 408,684 | 209,208 | 199,476 |
| 5-9 | 517,028 | 264,632 | 252,396 | 41 | 22 | 19 | 4,921 | 2,518 | 2,403 | 520,967 | 266,655 | 254,312 |
| 10-14 | 517,201 | 264,793 | 252,408 | 43 | 22 | 21 | 3,583 | 1,863 | 1,720 | 521,488 | 266,995 | 254,493 |
| 15-19 | 516,331 | 264,281 | 252,050 | 151 | 103 | 48 | 5,071 | 2,623 | 2,448 | 520,061 | 266,198 | 253,863 |
| 20-24 | 528,645 | 270,145 | 258,500 | 286 | 203 | 83 | 8,181 | 4,002 | 4,179 | 532,988 | 272,380 | 260,608 |
| 25-29 | 553,715 | 281,719 | 271,996 | 343 | 235 | 108 | 7,835 | 3,929 | 3,906 | 551,197 | 280,470 | 270,727 |
| 30-34 | 627,217 | 318,654 | 308,563 | 446 | 286 | 160 | 6,184 | 3,179 | 3,005 | 623,852 | 316,962 | 306,890 |
| 35-39 | 632,407 | 321,003 | 311,404 | 563 | 338 | 225 | 3,864 | 2,007 | 1,857 | 635,059 | 322,166 | 312,893 |
| 40-44 | 602,188 | 305,830 | 296,358 | 760 | 443 | 317 | 2,630 | 1,359 | 1,271 | 616,088 | 313,583 | 302,505 |
| 45-49 | 602,787 | 306,334 | 296,453 | 1,236 | 721 | 515 | 2,290 | 1,185 | 1,105 | 599,053 | 303,924 | 295,129 |
| 50-54 | 613,429 | 310,663 | 302,766 | 1,929 | 1,128 | 801 | 2,147 | 1,086 | 1,061 | 608,593 | 307,716 | 300,877 |
| 55-59 | 598,031 | 303,739 | 294,292 | 2,719 | 1,633 | 1,086 | 2,035 | 1,004 | 1,031 | 611,330 | 310,651 | 300,679 |
| 60-64 | 550,759 | 277,378 | 273,381 | 3,594 | 2,091 | 1,503 | 2,117 | 979 | 1,138 | 553,138 | 278,865 | 274,273 |
| 65-69 | 502,266 | 249,135 | 253,131 | 4,903 | 2,742 | 2,161 | 1,904 | 999 | 905 | 515,883 | 256,655 | 259,228 |
| 70-74 | 422,222 | 206,586 | 215,636 | 6,344 | 3,438 | 2,906 | 1,066 | 548 | 518 | 429,547 | 210,335 | 219,212 |
| 75-79 | 407,128 | 197,574 | 209,554 | 9,802 | 5,194 | 4,608 | 807 | 391 | 416 | 405,968 | 196,915 | 209,053 |
| 80-84 | 341,091 | 160,692 | 180,399 | 13,676 | 6,945 | 6,731 | 561 | 245 | 316 | 336,458 | 159,067 | 177,391 |
| 85+ | 521,390 | 234,554 | 286,836 | 49,275 | 22,004 | 27,271 | 390 | 193 | 197 | 535,326 | 241,812 | 293,514 |
| Total | 9,560,968 | 4,797,316 | 4,763,652 | 97,008 | 48,015 | 48,993 | 61,300 | 31,035 | 30,265 | 9,626,684 | 4,832,265 | 4,794,419 |

Fertility Measures: 2047-2048

| Age | Females | Births | 1yr Rate |
|--------------|-----------|---------|----------|
| 15-19 | 253,033 | 3,118 | .0123 |
| 20-24 | 259,605 | 15,139 | .0584 |
| 25-29 | 271,325 | 25,864 | .0953 |
| 30-34 | 307,661 | 33,951 | .1103 |
| 35-39 | 312,110 | 19,194 | .0615 |
| 40-44 | 299,402 | 4,158 | .0139 |
| Total | 1,703,135 | 101,424 | .3518 |

Summary Measures

| | 2047 | 2048 |
|-------------------------------|--------|--------|
| Child Dependency Ratio | 33.55 | 33.64 |
| Aged Dependency Ratio | 39.78 | 40.13 |
| Total Dependency Ratio | 73.33 | 73.77 |
| Sex Ratio | 100.71 | 100.79 |
| Male Life Expectancy | 83.46 | 83.64 |
| Female Life Expectancy | 85.75 | 85.86 |
| Total Fertility | 1.75 | 1.76 |
| General Fertility | 59.62 | 59.55 |

**Summary Population Report: 2048-2049
State of Washington**

| |
|----------------|
| Infants |
| Births |
| 101,762 |
| Deaths |
| 418 |

| Age | 2048 Base Population | | | Deaths | | | Net Migration | | | 2049 Estimated Population | | |
|--------------|----------------------|-----------|-----------|--------|--------|--------|---------------|--------|--------|---------------------------|-----------|-----------|
| | Total | Male | Female | Total | Male | Female | Total | Male | Female | Total | Male | Female |
| 0 | 101,004 | 51,708 | 49,296 | 775 | 402 | 373 | 798 | 408 | 390 | 101,344 | 51,883 | 49,461 |
| 1-4 | 408,684 | 209,208 | 199,476 | 118 | 62 | 56 | 4,916 | 2,517 | 2,399 | 410,615 | 210,200 | 200,415 |
| 5-9 | 520,967 | 266,655 | 254,312 | 41 | 22 | 19 | 4,934 | 2,525 | 2,409 | 524,651 | 268,548 | 256,103 |
| 10-14 | 521,488 | 266,995 | 254,493 | 43 | 22 | 21 | 3,594 | 1,869 | 1,725 | 525,889 | 269,253 | 256,636 |
| 15-19 | 520,061 | 266,198 | 253,863 | 150 | 102 | 48 | 5,083 | 2,630 | 2,453 | 523,816 | 268,130 | 255,686 |
| 20-24 | 532,988 | 272,380 | 260,608 | 285 | 202 | 83 | 8,206 | 4,013 | 4,193 | 537,053 | 274,469 | 262,584 |
| 25-29 | 551,197 | 280,470 | 270,727 | 339 | 231 | 108 | 7,771 | 3,896 | 3,875 | 552,990 | 281,423 | 271,567 |
| 30-34 | 623,852 | 316,962 | 306,890 | 439 | 282 | 157 | 6,111 | 3,142 | 2,969 | 617,284 | 313,640 | 303,644 |
| 35-39 | 635,059 | 322,166 | 312,893 | 561 | 336 | 225 | 3,866 | 2,008 | 1,858 | 638,405 | 324,186 | 314,219 |
| 40-44 | 616,088 | 313,583 | 302,505 | 770 | 450 | 320 | 2,680 | 1,388 | 1,292 | 626,592 | 318,656 | 307,936 |
| 45-49 | 599,053 | 303,924 | 295,129 | 1,216 | 708 | 508 | 2,265 | 1,170 | 1,095 | 597,641 | 302,855 | 294,786 |
| 50-54 | 608,593 | 307,716 | 300,877 | 1,891 | 1,102 | 789 | 2,119 | 1,070 | 1,049 | 606,655 | 307,239 | 299,416 |
| 55-59 | 611,330 | 310,651 | 300,679 | 2,756 | 1,655 | 1,101 | 2,068 | 1,021 | 1,047 | 618,579 | 313,491 | 305,088 |
| 60-64 | 553,138 | 278,865 | 274,273 | 3,575 | 2,079 | 1,496 | 2,115 | 979 | 1,136 | 559,826 | 282,637 | 277,189 |
| 65-69 | 515,883 | 256,655 | 259,228 | 4,996 | 2,797 | 2,199 | 1,944 | 1,022 | 922 | 527,355 | 262,824 | 264,531 |
| 70-74 | 429,547 | 210,335 | 219,212 | 6,386 | 3,459 | 2,927 | 1,080 | 555 | 525 | 439,249 | 215,537 | 223,712 |
| 75-79 | 405,968 | 196,915 | 209,053 | 9,740 | 5,152 | 4,588 | 797 | 385 | 412 | 400,855 | 194,319 | 206,536 |
| 80-84 | 336,458 | 159,067 | 177,391 | 13,347 | 6,787 | 6,560 | 555 | 244 | 311 | 335,885 | 159,561 | 176,324 |
| 85+ | 535,326 | 241,812 | 293,514 | 50,132 | 22,432 | 27,700 | 398 | 198 | 200 | 547,502 | 248,274 | 299,228 |
| Total | 9,626,684 | 4,832,265 | 4,794,419 | 97,560 | 48,282 | 49,278 | 61,300 | 31,040 | 30,260 | 9,692,186 | 4,867,125 | 4,825,061 |

Fertility Measures: 2048-2049

| Age | Females | Births | 1yr Rate |
|--------------|-----------|---------|----------|
| 15-19 | 254,851 | 3,149 | .0124 |
| 20-24 | 261,648 | 15,307 | .0586 |
| 25-29 | 271,104 | 25,927 | .0956 |
| 30-34 | 305,206 | 33,785 | .1107 |
| 35-39 | 313,518 | 19,342 | .0617 |
| 40-44 | 305,192 | 4,252 | .0139 |
| Total | 1,711,518 | 101,762 | .3529 |

Summary Measures

| | 2048 | 2049 |
|-------------------------------|--------|--------|
| Child Dependency Ratio | 33.64 | 33.72 |
| Aged Dependency Ratio | 40.13 | 40.45 |
| Total Dependency Ratio | 73.77 | 74.16 |
| Sex Ratio | 100.79 | 100.87 |
| Male Life Expectancy | 83.64 | 83.81 |
| Female Life Expectancy | 85.86 | 85.96 |
| Total Fertility | 1.76 | 1.76 |
| General Fertility | 59.55 | 59.46 |

**Summary Population Report: 2049-2050
State of Washington**

Infants
Births 102,087
Deaths 416

| Age | 2049 Base Population | | | Deaths | | | Net Migration | | | 2050 Estimated Population | | |
|--------------|----------------------|------------------|------------------|---------------|---------------|---------------|---------------|---------------|---------------|---------------------------|------------------|------------------|
| | Total | Male | Female | Total | Male | Female | Total | Male | Female | Total | Male | Female |
| 0 | 101,344 | 51,883 | 49,461 | 770 | 399 | 371 | 798 | 408 | 390 | 101,671 | 52,050 | 49,621 |
| 1-4 | 410,615 | 210,200 | 200,415 | 118 | 62 | 56 | 4,914 | 2,516 | 2,398 | 412,317 | 211,076 | 201,241 |
| 5-9 | 524,651 | 268,548 | 256,103 | 41 | 22 | 19 | 4,944 | 2,530 | 2,414 | 528,091 | 270,315 | 257,776 |
| 10-14 | 525,889 | 269,253 | 256,636 | 43 | 22 | 21 | 3,607 | 1,876 | 1,731 | 530,309 | 271,522 | 258,787 |
| 15-19 | 523,816 | 268,130 | 255,686 | 150 | 102 | 48 | 5,093 | 2,635 | 2,458 | 527,646 | 270,098 | 257,548 |
| 20-24 | 537,053 | 274,469 | 262,584 | 285 | 202 | 83 | 8,227 | 4,024 | 4,203 | 540,928 | 276,462 | 264,466 |
| 25-29 | 552,990 | 281,423 | 271,567 | 334 | 227 | 107 | 7,764 | 3,892 | 3,872 | 556,907 | 283,452 | 273,455 |
| 30-34 | 617,284 | 313,640 | 303,644 | 430 | 275 | 155 | 5,999 | 3,084 | 2,915 | 607,760 | 308,828 | 298,932 |
| 35-39 | 638,405 | 324,186 | 314,219 | 557 | 334 | 223 | 3,866 | 2,009 | 1,857 | 643,144 | 326,660 | 316,484 |
| 40-44 | 626,592 | 318,656 | 307,936 | 779 | 453 | 326 | 2,712 | 1,403 | 1,309 | 635,122 | 322,764 | 312,358 |
| 45-49 | 597,641 | 302,855 | 294,786 | 1,202 | 697 | 505 | 2,249 | 1,160 | 1,089 | 597,633 | 302,875 | 294,758 |
| 50-54 | 606,655 | 307,239 | 299,416 | 1,866 | 1,087 | 779 | 2,102 | 1,062 | 1,040 | 607,061 | 307,745 | 299,316 |
| 55-59 | 618,579 | 313,491 | 305,088 | 2,767 | 1,654 | 1,113 | 2,084 | 1,026 | 1,058 | 619,571 | 313,018 | 306,553 |
| 60-64 | 559,826 | 282,637 | 277,189 | 3,585 | 2,082 | 1,503 | 2,130 | 988 | 1,142 | 568,246 | 287,643 | 280,603 |
| 65-69 | 527,355 | 262,824 | 264,531 | 5,074 | 2,841 | 2,233 | 1,973 | 1,040 | 933 | 533,240 | 265,812 | 267,428 |
| 70-74 | 439,249 | 215,537 | 223,712 | 6,479 | 3,509 | 2,970 | 1,098 | 567 | 531 | 452,651 | 222,698 | 229,953 |
| 75-79 | 400,855 | 194,319 | 206,536 | 9,568 | 5,047 | 4,521 | 785 | 379 | 406 | 395,157 | 191,598 | 203,559 |
| 80-84 | 335,885 | 159,561 | 176,324 | 13,156 | 6,708 | 6,448 | 549 | 241 | 308 | 341,619 | 162,960 | 178,659 |
| 85+ | 547,502 | 248,274 | 299,228 | 50,809 | 22,776 | 28,033 | 406 | 203 | 203 | 558,487 | 254,361 | 304,126 |
| Total | 9,692,186 | 4,867,125 | 4,825,061 | 98,013 | 48,499 | 49,514 | 61,300 | 31,043 | 30,257 | 9,757,560 | 4,901,937 | 4,855,623 |

Fertility Measures: 2049-2050

| Age | Females | Births | 1yr Rate |
|--------------|------------------|----------------|--------------|
| 15-19 | 256,694 | 3,182 | .0124 |
| 20-24 | 263,577 | 15,470 | .0588 |
| 25-29 | 272,464 | 26,137 | .0959 |
| 30-34 | 301,231 | 33,450 | .1110 |
| 35-39 | 315,312 | 19,513 | .0619 |
| 40-44 | 310,119 | 4,335 | .0140 |
| Total | 1,719,396 | 102,087 | .3540 |

Summary Measures

| | 2049 | 2050 |
|-------------------------------|--------|--------|
| Child Dependency Ratio | 33.72 | 33.80 |
| Aged Dependency Ratio | 40.45 | 40.82 |
| Total Dependency Ratio | 74.16 | 74.62 |
| Sex Ratio | 100.87 | 100.95 |
| Male Life Expectancy | 83.81 | 83.99 |
| Female Life Expectancy | 85.96 | 86.07 |
| Total Fertility | 1.76 | 1.77 |
| General Fertility | 59.46 | 59.37 |

Office of Financial Management
PO Box 43113 • Olympia, WA 98504-3113
360-902-0555 • Fax 360-664-2832